

ODONTOTA ANNULIPES WATERHOUSE 1881
IS TRANSFERRED TO *XENOCHALEPUS*
(COLEOPTERA: CHRYSOMELIDAE: HISPINAE)

C. L. STAINES

3302 Decker Place, Edgewater, MD 21037, 410-956-2174

As part of my ongoing study on the taxonomy of New World Hispinae (Coleoptera: Chrysomelidae) I was awarded a grant from the Thomas Lincoln Casey Fund to study types at The Natural History Museum. While at The Natural History Museum, I examined the holotype of *Odontota annulipes* Waterhouse 1881 and found it belonged in *Xenochalepus* Weise, 1910 [type species: *Odontota omogera* Crotch] because it has 10 complete rows of punctures on each elytron plus a short scutellar row, the elytral margins not constricted after the middle, the apex of the fifth abdominal sternum emarginate, the labrum prominent, and the last tarsal segment triangularly produced between the tarsal claws.

Xenochalepus is divided into two subgenera, *Neochalepus* Staines & Riley 1994 and *Xenochalepus* s. str. *Xenochalepus* s. str. has two complete elytral costae with costae on intervals four and six obsolete. *Neochalepus* [type species: *Odontota medius* Chapuis] has three complete elytral costae and a fourth visible at the base and apex. *Xenochalepus annulipes* belongs in the subgenus *Neochalepus* because each elytron has three complete costae and a fourth visible at the base and apex.

Xenochalepus (*Neochalepus*) *annulipes* (Waterhouse) **n. comb.**
(Fig. 1)

Odontota annulipes Waterhouse 1881:268 [Holotype: Type (white disc with red border)/ Sarayacu, E. Ecuador, C. Buckley 91-97 (BMNH)].

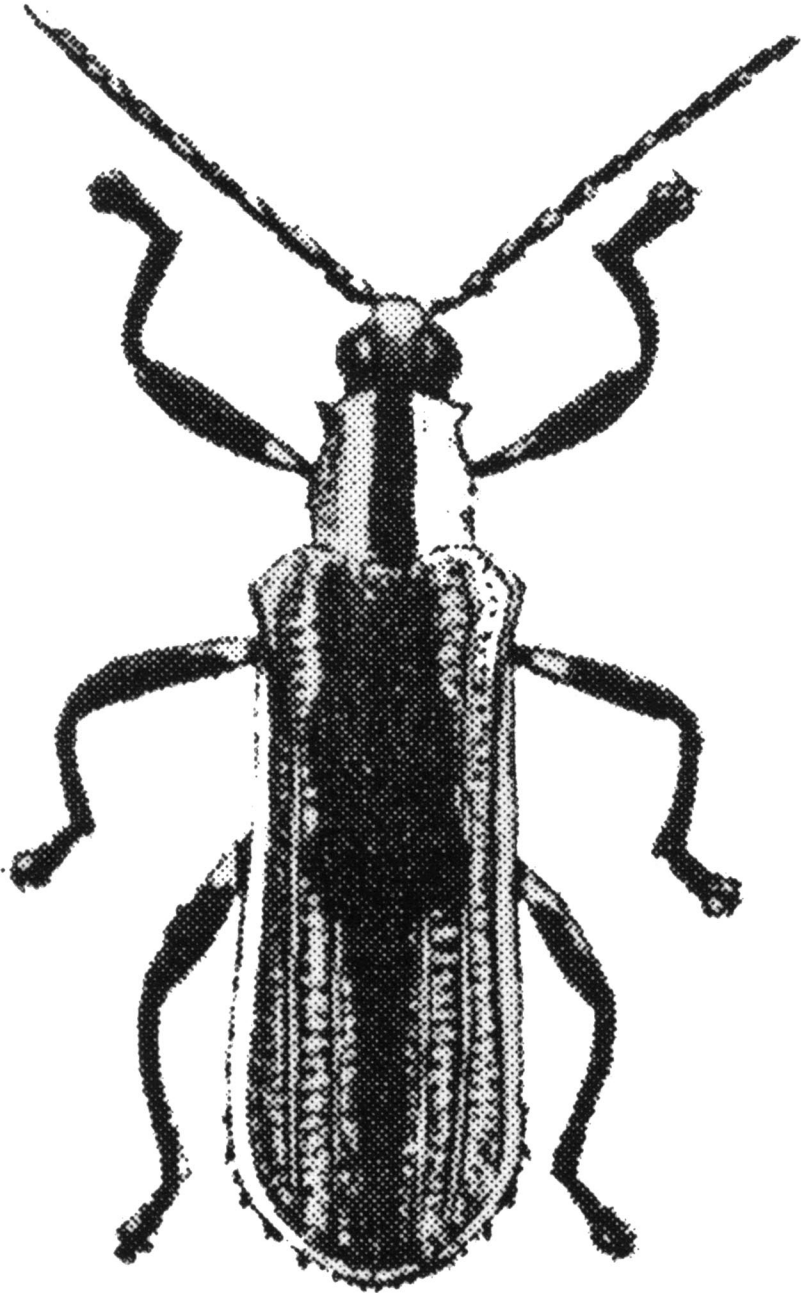


Fig. 1. *Xenochalepus annulipes*.

Chalepus annulipes. Weise 1910:139, 1911a:28, 1911b:90; Uhmman 1957:92.

Head: black; vertex trisulcate, micropunctate; frons tuberculate. Antennae: black, each segment reddish at base; segment I large, subglobose; II short, transverse; III and IV longer, subequal in length, slightly incrassate; V long but shorter than III or IV; VI to VIII transverse; X cylindrical; XI longer than X; VII to XI setose, remaining segments with sparse setae in punctures. Pronotum: yellowish orange with medial vitta and lateral margins black; obconical; sides convex, disc flattened; lateral margins sinuate; small rectangular tooth present in each anterior angle; large, deep, transverse basal impression present; strongly punctate laterally; disc sparsely punctate. Scutellum: black; quadrate; micropunctate. Elytra: yellowish orange with sinuate black medial mark until middle, thence to apex only with black sutural vitta; lateral margins dentate; apical margins strongly dentate; each elytron with 10 rows of strongly impressed punctures with a short scutellar row at base; interspaces 2 and 4 strongly costate for entire length, 6 costate at base and apex, 8 slightly raised for entire length, suture raised; humeri produced, expanded over lateral margins. Venter: pro-, meso-, and metasterna, and abdominal sternite 1 yellowish medially, black laterally; abdominal sterna 2 to 5 black medially, yellow laterally. Legs: femora punctate with a pale yellow band basally. Total length: 10 mm.

Specimens examined: ECUADOR: Sarayacu (BMNH). PERU: no further data (BMNH) **New Country Record**. Total: 2.

I thank Martin J. D. Brendell for access to the collection at The Natural History Museum (BMNH). Figure 1 was scanned from Waterhouse (1881).

SUMMARY

The holotype of *Odontota annulipes* Waterhouse 1881 was examined. The species is here redescribed and transferred to the genus *Xenochalepus* Weise, 1910. The species is reported from Peru for the first time.

REFERENCES CITED

- STAINES, C. L., AND E. G. RILEY. 1994. Nomenclature and status of *Xenochalepus* and *Hemichalepus* (Coleoptera: Chrysomelidae, Hispinae). *Journal of the Kansas Entomological Society* 67: 218-220.
- UHMANN, E. 1957. *Coleopterorum Catalogus. Supplementa. Chrysomelidae: Hispinae. Hispinae Americanae*. W. Junk, s'Gravenhage. pars 35(1): 1-153.
- WATERHOUSE, C. O. 1881. On the Coleopterous insects belonging to the family Hispididae collected by Mr. Buckley in Ecuador. *Proceedings of the Zoological Society of London* 1881: 260-269.
- WEISE, J. 1910. Zweiter Beitrag zur Kenntnis der Hispinen. *Verhandlungen des naturforschenden Vereines in Brünn* 48: 115-162.
- WEISE, J. 1911a. *Coleopterorum Catalogus. Chrysomelidae: Hispinae*. W. Junk, Berlin. pars 35: 1-94.
- WEISE, J. 1911b. *Coleoptera Phytophaga fam. Chrysomelidae, subfam. Hispinae*. In P. Wytzman (ed.). *Genera Insectorum*. Brussels. Fasc. 125: 1-123.