
Bureau of Economic and Business Research
Annual Report 2006-2007

July 2007

Bureau of Economic and Business Research
221 Matherly Hall
P.O. Box 117145
University of Florida
Gainesville, FL 32611-7145
Telephone: 352-392-0171
Fax: 352-392-4739
Web Site: www.bebr.ufl.edu

UF | UNIVERSITY of
FLORIDA
The Foundation for The Gator Nation

Staff members, Bureau of Economic and Business Research
July 2007

Director:

Stanley Smith, Ph.D., Professor and Program Director

Operations Programs

Administrative Services:

Clint Collins, B.S., Program Director

Janet Fletcher

Pamela Middleton

Paula Ivey

Information Technology:

Clint Collins, B.S., Program Director

Martin Smith, B.S.

Matthew Collins, B.A.

Information/Publications Services:

Susan Floyd, M.A., Program Director

Eve Irwin, B.A.

Phoebe Wilson, A.A.

Research Programs

Economic Analysis:

James (Jim) Dewey, Ph.D., Program Director

David Denslow, Ph.D., Professor of Economics

Babak (Bob) Lotfinia, B.A.

Gabriel Montes Rojas, Ph.D.

Lynne Holt, Ph.D. (part-time)

Population:

Stanley Smith, Ph.D., Professor and Program Director

Scott Cody, M.B.A.

Stefan Rayer, Ph.D.

Survey:

Chris McCarty, Ph.D., Professor and Program Director

Scott Richards, M.A.

Joel Montero, A.A.

Armando Padilla, A.A.

Mark Girson, B.S.

Bureau of Economic and Business Research
Annual Report 2006-2007

About the BEBR

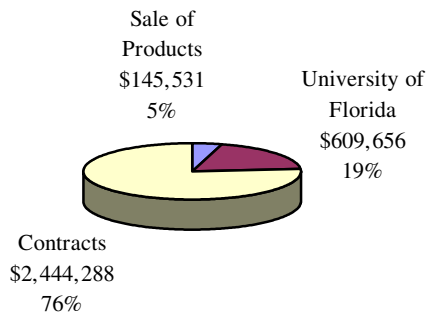
Founded in 1929, the Bureau of Economic and Business Research (BEBR) is an applied research center in the Warrington College of Business Administration at the University of Florida (UF). Its primary missions are to: 1) Produce and collect economic and demographic data for Florida and its local areas; 2) Conduct economic, demographic, and public policy research on topics of particular importance to the state of Florida; and 3) Distribute data and research findings throughout the state and the nation. BEBR seeks to conduct research that is both academically sound and directly relevant to public and private decision makers in Florida.

BEBR plays a number of roles within the state, the college, and the university. It conducts research that helps decision makers understand Florida's rapidly changing economic and demographic climate. It provides employment and training for numerous graduate students and more than 300 undergraduate students and part-time employees each year. It generates revenues by obtaining research contracts and grants and by selling data and publications. It creates favorable publicity for the college and the university through its publications, presentations, reference services, and contributions to public policy. Its staff members teach several courses each year. BEBR activities thus fall within the university's traditional functions of teaching, research, and service, but the impact of those activities spreads far beyond campus boundaries.

The Year in Review

BEBR made major strides in terms of technology in 2006-2007. The web site was completely redesigned and a new content management system was implemented, providing a foundation for the eventual deployment of an e-commerce system in which a vast array of current and historical data will be made available online. This redesign contributed to a substantial increase in web site traffic, as the number of unique visitors rose to more than 5,500 per month and total visits (including repeat visitors) rose to 8,400 per month. Significant changes were also made in the technology used by BEBR's Survey Program, with the development of an automated system for monitoring and evaluating telephone interviewers, the installation of a VOIP telephone system, and the purchase of new computer equipment for 75 telephone interview stations. These

**Figure 1. Estimated Revenues 2006-2007
(preliminary): \$3,199,475**



changes promise significant improvements in operational efficiency and reductions in costs.

Staff members were very productive throughout the year. They served as principal investigators on 35 research contracts generating more than \$2.4 million in gross revenues; had eight articles accepted for publication in academic journals; published four book chapters, two reports for the Florida Legislature, and 12 technical reports or data compilations; presented 12 papers at professional conferences; served on 19 university, professional, or civic boards and committees; taught ten courses in academic departments; served on five doctoral committees; made five presentations to civic groups; and responded to more than 3,000 requests for information from businesses, government agencies, the media, and members of the general public.

Total revenues in 2006-2007 were almost \$3.2 million, marking the eighth consecutive year in which revenues topped \$2.5 million. Approximately 76% of those revenues were generated by research contracts, 19% were provided by the university, and the remaining 5% came from the sale of data and publications (see Figure 1). As usual, salaries and wages accounted for approximately 80% of BEBR expenditures.

The **Economic Analysis Program** focused its research efforts on labor markets, housing markets, and education during 2006-2007. As part of a research team composed of groups from UF and Florida State University, the program was awarded a contract to study the revenue implications of potential changes in the state's property tax system.

This work will continue during the coming year and will have important public policy implications, both with respect to the economic impact of property tax reform and the way local governments respond to changes in their tax base. In total, funded research contracts in the Economic Analysis Program generated more than \$300,000 during the fiscal year.

The program once again produced the Florida Price Level Index, which is used to adjust K-12 school funding for differences in personnel costs across Florida's school districts. Staff members have been studying and refining the index since 1996 and have been responsible for its calculation and production since 2000. One of the papers submitted to a scholarly journal is an outgrowth of this ongoing research. Staff members also continued to collaborate with researchers in the UF College of Education, studying the costs and benefits of alternative teacher preparation programs in special education. This research is supported by a federal grant and is aimed at maximizing the effectiveness of efforts to boost the supply of highly qualified special education teachers.

Jim Dewey, director of the Economic Analysis Program, spent half his time during the past year teaching managerial economics for the Economics Department. This is a business core course that is delivered via electronic platform to approximately 750 students in both the Fall and Spring semesters. Gabriel Montes Rojas joined the program as a research economist and Sandra McGuire left to join her husband in California. During the year, staff members had four articles accepted for publication in scholarly journals, published two chapters in books focusing on public policy in Florida, prepared two reports for the Florida Legislature, wrote two *Florida Focus* articles, presented a paper at a professional conference, and gave four talks on Florida's economy to civic groups throughout the state.

The **Survey Program** and the **UF Survey Research Center (UFSRC)** had another successful year, generating more than \$1.7 million in survey research contracts. Contracts were received from several regular clients, including the Institute for Child Health Policy, the Florida Agency for Health Care Administration, the Florida Medicaid Center, the Florida Public Service Commission, and Visit Florida. Many of these surveys focused on healthcare issues, demonstrating the critical role the UFSRC plays in the development of healthcare policy in Florida, particularly as it affects Medicaid services. Surveys for the RAND Corporation, the Urban Institute, the Kaiser Family Foundation, the U.S. Department of Veterans Affairs, and universities in Kansas and Oregon reflect the program's growing national visibility. As usual, surveys were conducted for a number of UF colleges and departments, contributing to campus-wide research efforts.

Chris McCarty, director of the Survey Program, received a grant from the National Science Foundation (NSF) to study the social and cultural causes of hypertension. He also submitted a grant proposal to the NSF to study links between academic and applied scientific research and served as a reviewer on a NSF panel evaluating Ph.D. dissertation proposals. Staff members published two book chapters and three articles in scholarly journals, presented papers at three professional conferences, and collaborated on research projects with scholars from Spain, France, and Germany.

There were several important personnel and administrative changes in the Survey Program this year. Chris McCarty was appointed as an associate professor in the Department of Health Services Research, Management and Policy in the College of Public Health and Health Professions but will continue to serve as director of BEBR's Survey Program. Alicia Turner left the UFSRC to join another unit at UF and Mark Girson was hired as a project manager. Armando Padilla moved into project management and Joel Montero was promoted to field director. With the assistance of Clint Collins and Martin Smith, substantial progress was made in the development of an automated system for monitoring and evaluating interviewers. This will reduce management oversight efforts, improve interviewer efficiency, and lead to substantial cost savings over time. The development of a VOIP telephone system will reduce costs and its capability of recording and storing calls will be useful when documentation of calls is needed. New equipment was purchased and installed for 75 interview stations. Further improvements in automation and personnel management are planned for the coming year.

For the 35th consecutive year, the **Population Program** received a contract from the Florida Legislature to produce Florida's official population estimates and projections. Under the terms of this \$301,000 contract, the program produced estimates of total population for all cities and counties in Florida; state and county estimates of households and average household size; and population projections by age, sex, race, and Hispanic origin for the state and each county. These estimates and projections are used for a wide variety of planning and budgeting purposes, including the allocation of funds through the state's revenue-sharing program. Staff members conducted research on a variety of demographic topics, provided data to the U.S. Census Bureau, and responded to requests for demographic data and analysis from state and local government officials, business leaders, university researchers, members of the media, and the general public.

Stan Smith, director of the Population Program, collaborated with Chris McCarty to write two papers on Florida's 2004 hurricane season, one analyzing evacuation behavior

prior to the arrival of the hurricanes and the other evaluating the damages and demographic shifts caused by the hurricanes. He published a paper analyzing the accuracy of state population forecasts based on time series models and submitted a paper—jointly authored with Stefan Rayer—evaluating the performance of empirical prediction intervals for county population forecasts. Stefan Rayer submitted a paper evaluating the accuracy of population forecasts and Scott Cody wrote an article for *Florida Focus* describing shifts over time in Florida’s population center. Staff members in the Population Program published four reports on state and local population estimates and projections in Florida; presented six papers at professional conferences; reviewed two articles or manuscripts for scholarly publications; and made a presentation on national and world population trends to a local civic group. Stan Smith was appointed to the National Research Council’s Panel on the Design of the 2010 Census Program of Evaluations and Experiments. Smith and Cody served as Florida’s representatives to the Federal-State Cooperative Programs for Population Estimates, and Smith and Rayer served as Florida’s representatives to the Federal-State Cooperative Program for Population Projections.

The **Information/Publications Services Program** produced and published three annual statistical volumes about Florida and three monthly or annual reports during the past year: *Florida Statistical Abstract*, *Florida County Rankings*, *Florida County Perspective*, *Annual State and County Building Permits and Housing Starts, 1976-2005*, *Building Permit Activity in Florida*, and *Gross and Taxable Sales*. Staff members also published and distributed *Florida Estimates of Population* and three issues of *Florida Population Studies* and prepared the *Florida Public Schools Annual Fire Safety Report* for the Florida State Fire Marshal’s office. Staff members provided editorial and publication assistance for reports written by the Economic Analysis Program, including three *Florida Focus* online publication articles, the *Florida Price Level Index*, and the *Florida County Retail Price and Wage Indices*.

Several significant program activities and improvements occurred during 2006-2007. First, recognizing the increasing importance of providing timely data, staff members worked diligently to achieve the earliest release date since 2000 of the *Florida Statistical Abstract*. Second, staff members collaborated with members of the IT Program to modify and provide content for the redesigned BEBR web site. Finally, the Information/Publications Services Program conducted the first survey of publication users in more than ten years, providing information on the needs of data users and suggestions for improving BEBR’s products and services. The program continues to coordinate all BEBR’s marketing, distribution, and public relations efforts.

The Information/Publications Services Program continued to inform subscribers about new publication releases through an e-mail publication announcement service list. Customer feedback regarding this service has been very positive. Electronic format publication sales via e-mail increased 13% over the previous year, reducing printing and mailing costs. Staff members responded to more than 2,400 telephone and e-mail information requests throughout the year. Susan Floyd, Eve Irwin, and Phoebe Wilson served as judges for the 2006 Publications Award of Excellence presented by the Association for University Business and Economic Research (AUBER) and Susan Floyd was elected to serve a two-year term on the AUBER board of directors.

The **Administrative Services Program** managed the budget, tracked revenues and expenditures, maintained personnel files and appointments, handled orders and shipments of publications, provided oversight for compliance with UF rules and regulations, and performed many other essential office tasks. Staff members provided grant management services for the CIBER program and maintained the fire safety inspection portal for the State Fire Marshall's Office. The **Information Technology Program** completely redesigned the BEBR web site and implemented a new content management system, providing the foundation for the eventual deployment of an e-commerce system. These changes contributed to a substantial increase in web site traffic, as an average of 5,500 unique visitors generated 30,000 page views each month. IT staff members also provided a great deal of assistance to the Survey Program, helping develop an automated system for monitoring and evaluating telephone interviewers, installing a new telephone system, and installing new computer equipment for 75 interview stations.

Clint Collins, director of the Administrative Services and IT programs, served on UF's Technology Administrative Committee and Enterprise Calendar Project and continued as president of the Gator Linux Users Group. Martin Smith participated in UF's Web Managers Community Meeting and the Student InfoSec Team. There were several changes in the IT staff during the year, as Matt Collins was hired to replace Jason Casiano, who left for another position at UF.

BEBR currently employs 21 fulltime staff members and a large number of part-time workers, graduate students, and undergraduate students (see Figure 2). This report provides a quick overview and summary of our activities and accomplishments from May 1, 2006 through April 30, 2007. For additional information of BEBR's products, services, and research activities, check out our website at www.bibr.ufl.edu or give us a call at (352) 392-0171.

Figure 2. Organizational Chart, BEBR

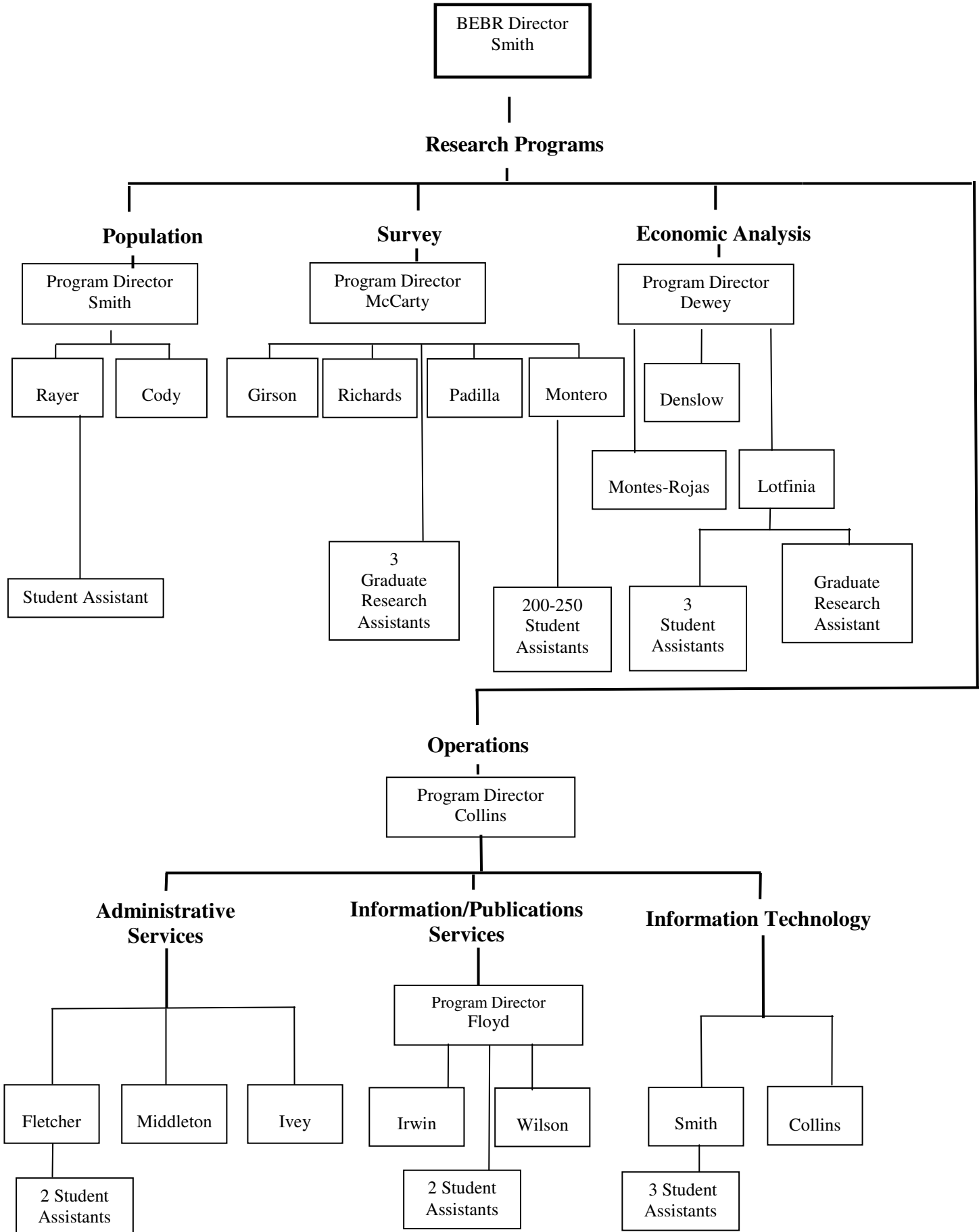


Table 1. Publications, 2006-2007

Acosta, P. and Gabriel Montes Rojas

“A Simple IM Test for Exponential Distributions,” *Applied Economics Letters*, forthcoming.

Cody, Scott

“Florida’s Population Center Migrates through History,” *Florida Focus*, Vol. 2, No. 1, April 2006.

Dewey, Jim, David Denslow, and Bob Lotfinia

“2005 Florida County Retail Price and Wage Indices,” Bureau of Economic and Business Research, December 2006.

“2006 Florida Price Level Index,” report prepared for the Florida Legislature, February 2007.

Dewey, Jim, David Denslow, Chifeng Dai, Paul Sindelar, and Mike Rosenberg

“Economic Analysis and Design of Alternative Route Teacher Education Programs,” *Journal of Teacher Education*, forthcoming.

Floyd, Susan, Eve Irwin, and Phoebe Wilson

Florida Statistical Abstract, 2006, 40th ed., Bureau of Economic and Business Research, September 2006.

Florida County Rankings, 2006, 13th ed., Bureau of Economic and Business Research, February 2007.

Holt, Lynne

“Economic Aspects of Potential Legal Challenges to Save Our Homes Portability Proposals,” *Florida Focus*, Vol. 3, No. 1, February 2007.

**Table 1. Publications, 2006-2007
(continued)**

Irwin, Eve

Building Permit Activity in Florida, Bureau of Economic and Business Research, annual 2006 and monthly 2006-2007.

Gross and Taxable Sales Reports, Bureau of Economic and Business Research, annual 2006 and monthly 2006-2007.

Irwin, Eve and Phoebe Wilson

Florida County Perspective, 2006, Bureau of Economic and Business Research, March 2007.

Lotfinia, Babak, Jim Dewey and David Denslow

"Economic Sustainability in Florida," *Towards a Sustainable Florida*, edited by Stephen Mulkey, for the Florida Century Commission, September 2006.

Lotfinia, Babak and Lynne Holt

"Florida's K-12 Education System," *Government of Florida*, edited by Edwin Benton, University Press of Florida, Gainesville, FL., forthcoming.

McCarty, Christopher and Peter Killworth

"Impact of Methods for Reducing Respondent Burden on Personal Network Structural Measures Social Networks," *Social Networks* 29: 300-315, 2007.

McCarty, Christopher, J.L. Molina, C. Aguilar, and Laura Rota

"La estructura social de la memoria", in C. Lozares (ed.), *Interacción, Redes Sociales y Ciencias Cognitivas*. Barcelona: La Razón Áurea, 2005.

**Table 1. Publications, 2006-2007
(continued)**

McCarty, Christopher, J.L. Molina, Roser Fernández, and Jaume Llopis

“Redes sociales y apoyo social,” in María Zúñiga Coronado,(ed.), *Las Redes Sociales y el Trabajo Social*. Mexico City, 2006.

McCarty, Christopher, A. Clifton, and P.A. Pilkonis

“Social Networks in Borderline Personality Disorder,” *Journal of Personality Disorders*, forthcoming.

McCarty, Christopher, Gene A. Shelley, Peter D. Killworth, H. Russell Bernard, Eugene C. Johnsen, and Ronald E. Rice

“Who Knows your HIV Status II: Information Propagation within Social Networks of Seropositive People,” *Human Organization*. 65: 430-445, 2006.

Montes Rojas, Gabriel

“Non-Uniform Wealth Distribution in a Simple Spatial Banking Model,” *Journal of Applied Economics*, forthcoming.

Montes Rojas, Gabriel and L. Siga

“On the Nature of Micro-entrepreneurship: Evidence from Argentina,” *Applied Economics*, forthcoming.

Montes Rojas, Gabriel, Sandra McGuire, Susan Ivey, and Tom Durrenberger

“The Florida Housing Boom,” *Florida Focus*, Vol. 3, No. 2, February 2007.

Smith, Stanley and Scott Cody

“Number of Households and Average Household Size in Florida: April 1, 2006”, *Florida Population Studies*, Vol. 40, Bulletin 146, January 2007.

**Table 1. Publications, 2006-2007
(continued)**

Smith, Stanley and Stefan Rayer

“Population Projections by Age, Sex, Race, and Hispanic Origin for Florida and Its Counties, 2006–2030,” *Florida Population Studies*, Vol. 39, Bulletin 145, June 2006.

“Projections of Florida Population by County, 2006–2030,” *Florida Population Studies*, Vol. 40, Bulletin 147, February 2007.

Smith, Stanley, Scott Cody and Stefan Rayer

Florida Estimates of Population 2006, Bureau of Economic and Business Research, February 2007.

Tayman, Jeff, Stanley Smith, and Jeffrey Lin

“Precision, Bias, and Uncertainty for State Population Forecasts: An Analysis of Time Series Models,” *Population Research and Policy Review*, forthcoming.

Table 2. Presentations at Academic/Professional Conferences, 2006-2007

McCarty, Chris

“Workshop on Social Network Analysis,” American Anthropological Association, San Jose, CA, November 2006.

“Methods for Cultural Anthropology,” American Anthropological Association, San Jose, CA, November 2006.

“Personal Networks as a Measure of Acculturation,” American Anthropological Association, San Jose, CA, November 2006.

“Society for Anthropological Sciences,” Workshop on Social Network Analysis, San Antonio, TX, February 2007.

“Workshop on Social Network Analysis,” Society for Applied Anthropology, Tampa, FL, March 2007.

Montes Rojas, Gabriel

“Optimal Locally Sized Robust Specification Tests,” Midwest Econometrics Group, Cincinnati, OH, October 2006.

Rayer, Stefan

“Modeling Complexity: Does Forecast Sophistication Pay?” Southern Demographic Association, Durham, NC, October 2006.

“Empirical Prediction Intervals for County Population Forecasts,” Population Association of America, New York, March 2007.

Smith, Stanley

“US Census Bureau Population Estimates: Thoughts and Suggestions,” U.S. Census Bureau Population Estimation Conference, Washington DC, July 2006.

**Table 2. Presentations at Academic/Professional Conferences, 2006-2007
(continued)**

Smith, Stanley (continued)

“Empirical Prediction Intervals for County Population Forecasts,” British Society of Population Studies, Southampton, England, September 2006.

“Florida’s 2004 Hurricane Season: Demographic Response and Recovery,” Southern Demographic Association, Durham, NC, October 2006.

“Fleeing the Storm(s): Evacuations During Florida’s 2004 Hurricane Season,” Population Association of America, New York, March 2007.

“Population Estimates in Florida,” Federal-State Cooperative Program for Population Estimates, New York, March 2007.

Table 3. Presentations to Business/Civic/Government Groups, 2006-2007

Denslow, David

"Economic Diversification," Enterprise Florida, Gainesville, July 2006

"Economy of Florida," Association of School Boards, Palm Beach, September 2006

"Economy of Florida," FICPA, Gainesville, October 2006

"Lakeland Outlook," Lakeland Chamber of Commerce, Lakeland, January 2007

Smith, Stanley

"Demography as Destiny," presentation to Institute for Learning in Retirement,
Gainesville, May 2006

Table 4. Professional and University Service, 2006-2007

Cody, Scott

Florida Representative, Federal State Cooperative Program for Population Estimates, US
Census Bureau

Collins, Clint

Member, Technology Administrative Committee, Network Infrastructure, UF
Member, UF Enterprise Calendar Project
President, Gator Linux Users Group

Denslow, David

Member, College of Business Teaching Committee
Member, UF Future of the Library Committee
Member, UF Honorary Degree Committee
Member, Collins Institute Board of Directors
Member, SUS Board of Governors Facilities Task Force
Trustee, City of Gainesville Police & Fire Pension Board

Floyd, Susan

Member, UF Communications Network.
Board of Directors, Association for University Business and Economic Research
(AUBER)

McCarty, Chris

Reviewer, National Academy of Sciences, Cultural Anthropology Dissertation Proposal
Panel

Rayer, Stefan

Florida Representative, Federal State Cooperative Program for Population Projections, US
Census Bureau

**Table 4. Professional and University Service, 2006-2007
(continued)**

Smith, Martin

Participant, Web Managers Community Meeting
Staff Participant, Student InfoSec Team

Smith, Stanley

Member, Panel on the Design of the 2010 Census Program of Evaluations and
Experiments, National Research Council, National Academy of Sciences
Florida Representative, Federal State Cooperative Programs for Population Estimates
and Population Projections, US Census Bureau
Discussant, US Census Bureau Conference on Population Estimates, Washington DC
Referee, *Demography*
Reviewer, Springer Publishers
Member, Department of Economics Teaching Peer Review Committee

Table 5. Contracts and Grants Awarded, 2006-2007*

Collins, Clint

“Inspection Report Data Entry Module,” Division of State Fire Marshal \$9,610

Dewey, Jim

“Analytical Services Relating to Property Taxation,” Florida Legislature \$142,597

“Florida Price Level Index,” Florida Legislature \$150,000

“Optimizing Investments in Teacher Preparation Alternatives,” U.S. Department of Education \$26,607

McCarty, Chris

“Qualifying Scientific Impact: Cross-Disciplinary Trends and Attitudes,” University of Florida Opportunity Fund \$52,012

McCarty, Chris, Scott Richards, Armando Padilla, Mark Girson

Surveys for:

Alachua County Animal Services	\$4,000
Brevard Workforce Development Board, Inc.	19,000
Duval County Health Department	16,676
Florida Agency for Health Care Administration	359,379
Florida Department of Children & Families	22,470
Florida Department of Corrections	1,000
Florida Department of Transportation	53,130
Florida Legislature - FPLI	35,000
Florida Public Service Commission	12,000
Gunster and Yoakley, Attorneys	323
Kaiser Family Foundation	95,000
MacArthur Foundation Research	1,650
Q-Squared Research	400
RAND Corporation	47,953
UF College of Business Administration	10,750
UF College of Dentistry	52,547
UF College of Public Health	24,682

Table 5. Contracts and Grants Awarded, 2006-2007*
(continued)

UF Department of Psychiatry	2,826
UF Department of Wildlife & Conservation	20,000
UF Institute for Child Health Policy	748,005
UF University Relations	1,200
UF Women's Health Research Center	1825
University of Kansas	13,823
University of Miami	43,470
University of Oregon	37,632
University of South Florida	113,275
U.S. Department of Veterans Affairs	1,002
US Veterans Administration Medical Center	11,462
VISIT FLORIDA	12,000
 Subtotal	 \$1,762,481
 Smith, Stanley	
 "Population Research Contract," Florida Legislature	 \$300,981
 TOTAL	 \$2,444,288

*Note: These data refer to contracts and grants awarded during the 2006-2007 fiscal year. Not all of the revenues were actually received during that fiscal year.

Table 6. Courses Taught, 2006-2007

Denslow, David

Summer A 2006	ECO 2013	Intro Macroeconomics	142	students
Summer B 2006	ECO 2013	Intro Macroeconomics	185	students
Fall 2006	ECO 2013	Intro Macroeconomics	863	students
Fall 2006	ECP 3203	Labor Economics	34	students
Spring 2007	ECO 2013	Intro Macroeconomics	1,036	students
Spring 2007	ECO 4934	Honors Urban Economics	25	students

Served on five doctoral committees in the Economics Department

Dewey, Jim

Summer C 2006	ECP 3703	Managerial Economics	40	students
Fall 2006	ECP 3703	Managerial Economics	800	students
Spring 2007	ECP 3703	Managerial Economics	700	students

McCarty, Chris

Summer C 2006	PHC6937	Survey Research Methods	14	students
---------------	---------	-------------------------	----	----------