

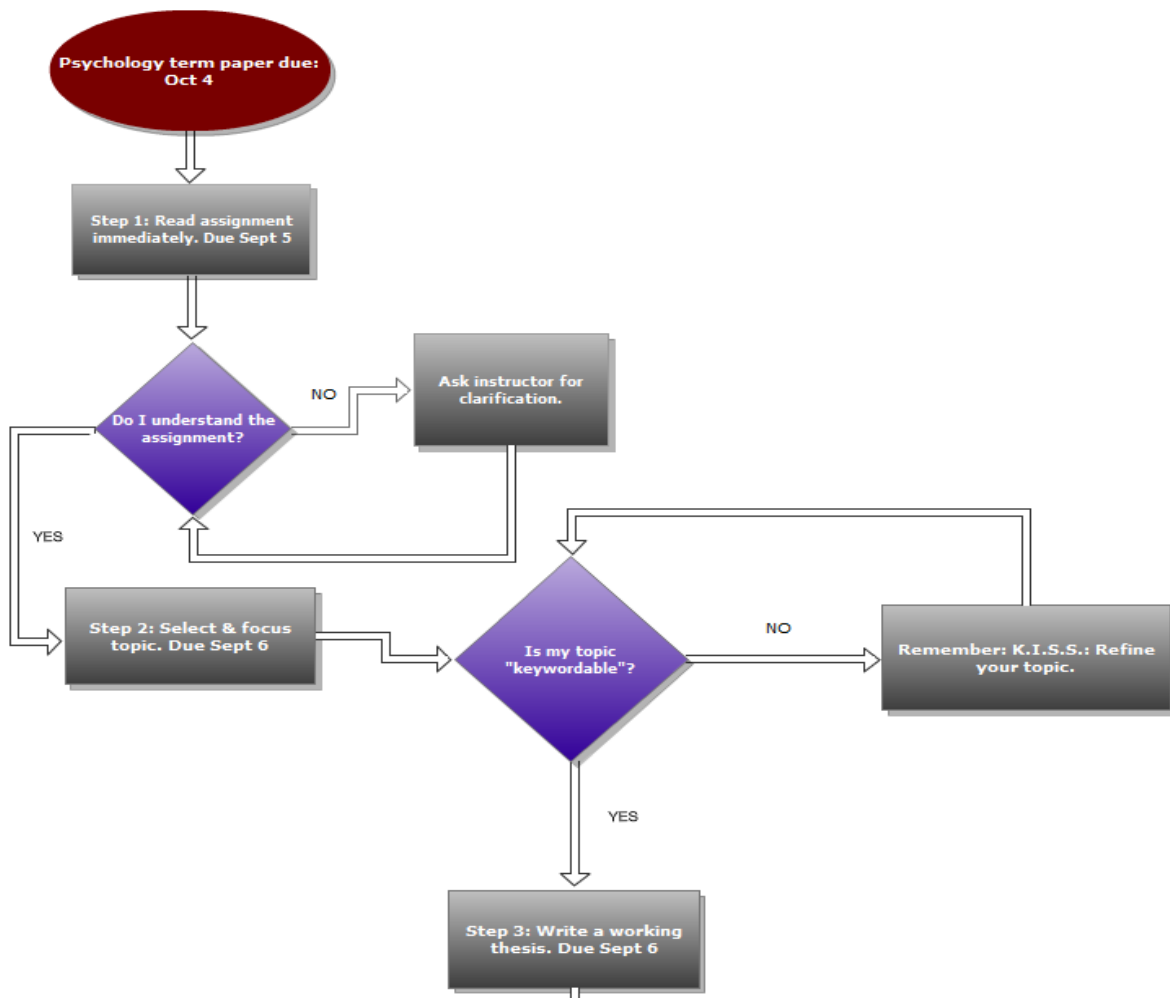


LITERACY LAB

RESEARCH MAP

OVERVIEW

You will apply the steps of the research process to a writing assignment you will be working on in another course this semester. Below is an example of how the first few steps might look:





LITERACY LAB

DUE DATE

Literacy Lab 2 is due 9/10/12 before 11:55 PM.

LAB DIRECTIONS

Step by step directions for completing the assignment.

1. Choose a writing assignment (such as a term paper) that you will be working on in one of your classes this semester.
2. Go to the Assignment Calculator (<http://www.uflib.ufl.edu/librarywest/>) and type in the day the assignment was given and the day it is due. Calculate your assignment schedule.
3. The Assignment Calculator will show you each step you should follow to successfully complete your assignment as well as the date each step is due.
4. Using this information, create a flow chart of how your research process will go. Include the due dates from each step in your chart. Think about some of the obstacles you will encounter along the way and how you will resolve them. Use diagramming software (ex. create.ly, gliffy, Microsoft Office, etc.) to create your chart.
5. Submit your completed chart to the course website as a single document in Word (.doc, .docx) or PDF (.pdf) format.

GRADING RUBRIC

Percent of grade= 4%

Total possible points = 4 points

Criteria	Points
Flow chart incorporates all of the steps from the Assignment Calculator as well as the due dates for each step.	2.5
Demonstrates creative use of flow chart software.	1.0
Follows all formatting guidelines (pdf, doc, docx) and submission requirements.	0.5
TOTAL	4.0