



UF College of Education  
ANNUAL REPORT 2008

“We must  
become  
the  
change  
we wish to  
see in the  
world.”

—Mohandas Gandhi





## contents

- 2 2007-08 Highlights
- 4 Key Initiatives
- 6 Discovery
- 8 The Year in Pictures
- 10 Faculty Research Awards
- 13 Laurels
- 14 Engaged Scholarship
- 15 Education Hot Spots
- 16 Alumni and Giving
- 18 Honor Roll of Giving





## Joining hands for critical change

The theme for our 2008 Annual Report is based on Mohandas Gandhi's inspiring words: "*We must become the change we wish to see in the world.*" Faculty and administrators in the College of Education at the University of Florida over the last five years have quietly focused on rethinking longstanding traditions in the academy within a framework of engaged scholarship and the development of a learning community. The programs showcased in this report feature our commitments:

- maintaining the preparation of high-quality teachers, administrators, counselors and school psychologists, along with future faculty for these same fields;
- developing innovative programs for continuing professional development for practicing educators;
- rewarding cutting-edge and engaged scholarship across all fields;
- increasing the use of technology for delivering online instruction;
- participating in cross-disciplinary programs with departments and

colleges across campus, especially in the life sciences;

- establishing strong collaborative partnerships with school districts and community groups, particularly in high-poverty areas.

All these elements are woven together to link scholarship, teaching and service for all students who will become the next generation of leaders. To support this work, college faculty brought in over \$12 million in new grant funding, and our research expenditures increased by 46 percent from 2007.

Our efforts have not gone unnoticed by generous alumni and friends of the College of Education. We are engaged in a \$20 million capital campaign in which we have already reached 92 percent of our goal. We have awarded a record number of endowed scholarships and fellowships (\$85,850), and currently have two endowed professorships and one endowed chair. Seeking private support in these difficult economic times is more challenging than ever, but we

are greatly heartened by the strong commitment and passion felt not just for the college, but for the work that is accomplished here.

In his last book published before his death, "Available Light", noted anthropologist Clifford Geertz wrote: "An assessment of the moral implications of the scientific study of human life ... must begin with an inspection of social scientific research as a variety of moral experience." I am pleased to celebrate in this report the achievements of faculty and students whose moral and scholarly commitment to building effective partnerships with pre-K-12 schools, community organizations, businesses and families helps create a more sustainable and equitable future for the next generations to come.

Dr. Catherine Emihovich  
Dean

The mission of the College of Education is to prepare exemplary practitioners and scholars; to generate, use and disseminate knowledge about teaching, learning and human development; and to collaborate with others to solve critical educational and human problems in a diverse global community.

#### THE COLLEGE AT A GLANCE



##### Major Academic Programs

Counselor Education  
Educational Administration & Policy  
Educational Psychology  
Special Education  
Teaching & Learning

##### Centers

Center for School Improvement  
Lastinger Center for Learning  
UF Alliance

National Center to Inform Policy  
and Practice in Special Education  
Professional Development (NCIPP)

##### Laboratory School

P.K. Yonge Developmental  
Research School

<b>Students</b>	1,873
Undergraduate	651
Graduate	1,222

<b>Online Enrollment</b>	1,749
<b>Faculty (full-time)</b>	76
<b>Staff</b>	70

<b>Degree programs</b>	20
------------------------	----

<b>Operating budget</b>	\$32 million
-------------------------	--------------

##### National Rankings

*(US News & World Report)*

**25th** among public education schools of  
the elite AAU institutions

**3rd** Counselor Education program

**4th** Special Education program

# Alumni of Distinction



Perdue



Dozier



Mica



Smith



Holcombe

The College of Education is Florida's oldest and most prestigious education college, with 28,000 dedicated alumni living throughout the United States and the world. Education alumni can be found in numerous important roles throughout the nation. They include:

- **Forrest Sawyer** (MED '76), an Emmy Award winning broadcast journalist famous for his work as a reporter and anchor for ABC, CBS and NBC. He now runs his own production company.
- **Beverly Eaves Perdue** (MED '74, PHD '76), elected first woman governor of North Carolina in 2008 and was previously a two-term lieutenant governor.
- **John Mica** (BAE '67), U.S. Congressman (R-Winter Park) for East Central Florida District 7 since 1992.
- **Terry Knecht Dozier** (BAE '74, MED '77), 1985 National Teacher of the Year, named UF Distinguished Alumna in 1986 and special adviser to the U.S. Secretary of Education from 1993-2001.
- **Braulio Alonso** (MAE '49), First ethnic minority (Hispanic) president of the National Education Association (1967-68), helped complete the merger between NEA and the national black teachers' association.
- **Karen Thurman** (BAE '73), U.S. congresswoman for Florida District 5 from 1993 to 2002, and chair of the Florida Democratic Party since 2005.
- **Willis Holcombe** (MED '72, PHD '74), appointed chancellor of Florida's community college system in 2008 and former president of Broward CC.
- **Alice McCarthy** (DED '49), first woman at UF to earn a doctorate degree.
- Seven COE graduates were among 47 university alumnae honored in 1997 as UF Women of Distinction: **Catherine Cornelius** (EDS '76, DED '78), **Gay Culverhouse** (BAE '69), **Therese Dozier** (BAE '74, MED '77), **Martha McCarthy** (PHD '75), **Margretta Madden Styles** (DED '68), **Karen Thurman** (BAE '73) and **Julie Underwood** (PHD '84).

## WE'RE A LEAN, MEAN DEAN MACHINE

At least eight UF education alumni currently sit as deans at U.S. education colleges, continuing the COE's tradition of turning out top education leaders. The alumni deans, and the education colleges they head, include:

■ <b>Sandra Bowman Damico</b> (DED '73)	U. of Iowa
■ <b>Samuel Dietz</b> (MED '69, PHD '78)	Texas Christian U.
■ <b>Gerardo Gonzalez</b> (PHD '78)	Indiana U.
■ <b>Jeffery Gorrell</b> (PHD '75)	George Mason U.
■ <b>William H. Graves</b> (MED '70, PHD '72)	Old Dominion U.
■ <b>James E. McLean</b> (BSE '68, PHD '74)	U. of Alabama
■ <b>William E. Sparkman</b> (MED '73, PHD '75)	U. of Nevada, Reno
■ <b>Julie Underwood</b> (PHD '84)	U. of Wisconsin, Madison



# 2007-08 Highlights



Classroom technology growth

■ **Early-childhood scholar.** Prominent early-child studies scholar Patricia Snyder joined the faculty as the first David Lawrence Jr. Endowed Chair in Early Childhood Studies. She is leading collaborative, cross-disciplinary research and programs addressing the complex needs of children from before birth to entering kindergarten—a vital area of study drawing heightened emphasis at the College.

■ **Science, math teaching.** Supported by grants totaling \$3.4 million, the COE enrolled its first class (of 33 students) in *UFTeach*, a new teacher education program that represents a radically different approach to recruiting science and mathematics teachers. *UFTeach* recruits science and math majors at all levels of college, and inducts them into the community of teachers by giving them classroom experiences beginning in the first semester of the program.

■ **Classroom technology.** UF ed-tech researchers partnered with seven school districts—from St. Johns County in northeast Florida to Broward

County in the south—to boost student achievement through improved classroom technology. The federally funded “Florida Digital Educator Program” is being duplicated this year in 16 other school districts, stretching from the Panhandle to Collier County in southwest Florida.

■ **Distance education growth.** Students in the College’s burgeoning distance learning program increased their total credit hours earned online in 2008 to nearly 7,250 hours, a jump of nearly 75 percent over the previous year. That online total represents more than 11 percent of total credit hours earned in all College courses, compared with less than 7 percent in the previous year. E-learning student enrollment for the year totaled 1,749—a 70 percent gain over the previous year.

■ **Capital campaign.** The College launched its \$20 million fundraising effort as part of UF’s “Florida Tomorrow” capital campaign, and has already raised more than 90 percent of its goal. The top fundraising priority calls for renovating and expanding historic Norman Hall to create a “beyond-





Improving science and mathematics teaching

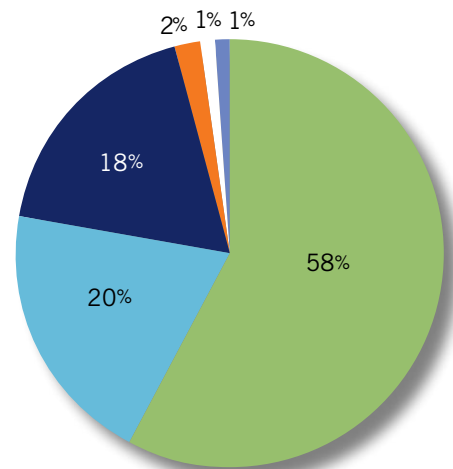
state-of-the-art” education research and technology complex.

■ **Novice teachers.** More than 70 educators from Florida and Puerto Rico attended the 2008 Annual Novice Teacher Conference, staged last winter in Orlando by the UF Alliance program. The conference acquaints novice teachers with a repertoire of best practices to better prepare their students with the academic skills they need to gain college access.

■ **Campuswide assessment.** The College’s research and evaluation methodology program received a \$120,000 UF internal grant to establish Collaborative Assessment and Program Evaluation Services (CAPES), which provides vital evaluation and research support for grant programs across campus and in local school districts. CAPES offers additional placement opportunities for UF graduate students in statistics, research, design, measurement or evaluation.

■ **Let’s Talk Science.** With the state drafting tough new curriculum standards, a new, collaborative effort called “Let’s Talk Science” is preparing elementary school teachers for a more rigorous science curriculum. P.K. Yonge Developmental Research School (the College’s laboratory school since 1934) is teaming with UF education professors and Union County schools to lead a series of science content immersion training sessions and help teachers develop an inquiry-based, standards-driven science curriculum.

■ **Inquiry showcase.** Some 400 teachers and administrators from 15 Florida school districts joined UF and P.K. Yonge Developmental Research School faculty and student-teachers in Gainesville to present their own classroom-based research at the fourth annual Teacher Inquiry and Innovation Showcase, staged by the College’s Center for School Improvement.



**Sources of Revenue FY 2007-08**

Total Operating Budget: \$32 million

- State Appropriations
- Grants and Contracts
- Gifts and Contracts
- State-funded Tuition Waivers
- Distance Education Tuition
- Other



# Key Initiatives

*... Ensuring excellence in education from preschool to graduate school*



Improving access to higher education

■ **School readiness for our youngest learners.** Under a shared \$10 million grant, early-childhood educators with the UF Lastinger Center for Learning are partnering with public school districts and community groups to expand research-proven school readiness programs—first in Miami-Dade County schools and then throughout Florida. The program is designed to smooth the transition to school for the alarming number of young children who are likely to start school unprepared.

■ **Statewide school improvement.** Three College-wide centers each focus on different aspects of school improvement, and all are expanding their reach:

- The **LASTINGER CENTER FOR LEARNING**, known for developing new models of teaching and learning, now boasts a statewide network of nearly 100 partnering elementary schools across the state—mostly in impoverished communities and inner-city neighborhoods.
- The **UF ALLIANCE** partners with high-poverty high schools and middle

schools in Florida's three largest cities—Jacksonville, Orlando and Miami—and now with the School District of Puerto Rico, too, promoting access and exposure to the college experience to more than 1,500 first-generation minority students each year.

- UF's **CENTER FOR SCHOOL IMPROVEMENT** cultivates partnerships with high-needs K-12 schools in 14 Northeast Florida counties, providing novel “inquiry-based” professional development programs as a primary method of school improvement.

■ **Help for novice special-ed teachers.** Beginning special education teachers are considered the most vulnerable teachers in America's school system, receiving little support for one of the most challenging jobs. Under a \$2.5 million grant from the U.S. Department of Education, UF special education researchers have established NCIPP—the National Center to Inform Policy and Practice in Special Education—to work with states and local school districts in the study and introduction of new strategies for improving the retention and quality of beginning special education teachers.







School readiness for our youngest learners



Better numbers for mathematics and science

■ **Better numbers for math and science.**

With \$6 million in combined grant support, the College of Education is partnering with other UF colleges on two key initiatives in an unprecedented effort to strengthen the recruitment and retention of science and mathematics majors and educators, a critical workforce need in Florida and across the nation. The new *UFTeach* program uses innovative recruiting strategies to draw UF's best and brightest math and science majors into teaching, and supports these news teachers through their induction years. The nine-college *Science for Life* program, sponsored by the Howard Hughes Medical Institute, is designed to dramatically bolster science education from kindergarten through college, starting with UF's own student body.

■ **Relieving the epic teacher shortage.**

To boost the ranks of qualified teachers and help schools retain their most experienced instructors, the College is maintaining its renowned teacher preparation programs and instituting some new strategies. A second alternative certification program—in Duval County—

UF's Counselor Education program has placed in the top 5 nationally for 12 straight years—including the top position in 1997.

has been added to complement the College's traditional teacher preparation programs. The two state-approved Educator Preparation Institutes (or EPIs) provide an accelerated alternative entry to teaching experience that allows career-changers who possess an undergraduate degree outside of education to gain teacher certification in elementary education. Three new education minors from the College also prepare undergraduates with non-education majors for temporary teacher certification in

Florida. To help school districts keep the most effective and experienced teachers they already have, the College's new online degree courses and professional development opportunities provide easy access for practicing educators in any Florida school district.

■ **Improving access to higher education.**

To boost access to an affordable college education for state residents, a new law now allows Florida community colleges to grant a limited number of four-year baccalaureate degree programs and creates a new state college system to oversee them. Working through the Community College Leadership Consortium at UF, faculty scholars and doctoral students in Higher Education Administration collectively serve as an independent think tank, conducting vital research and helping community college leaders weigh the pros and cons of conversion to a four-year state college. For those choosing to make the shift, the UF team provides guidance on how to tailor a baccalaureate program specifically for the higher-education needs of their local or regional community.

# Discovery

*...Transformation through collaborations  
in research and teaching*



Faculty at the College of Education and its K-12 laboratory school, P.K. Yonge Developmental Research School, together generated nearly \$6.5 million last year in research and training grant expenditures—a jump of more than \$2 million, or 46 percent, over 2007 and the largest expenditure total over the past five years. Faculty scholars attracted more than \$12 million in 2008 in grant support for newly funded projects (with expenditures spread over multiple years).

A heightened focus on “engaged scholarship”—cutting-edge research and academic activities done for the public good—is generating more opportunities for multidisciplinary research collaborations. With four designated research centers at the College, UF education faculty, often with co-researchers from other colleges, are partnering with public schools, school districts and communities throughout Florida to tackle some of the most critical education issues of the day. Key study areas include statewide school improvement, school readiness for at-

risk preschoolers, teacher recruitment and retention, college access for first-generation minority students, and revitalizing teaching and learning in math, science, civics and other neglected but critical subjects.

Strengthened research efforts are yielding transformational change in virtual (online) schooling, community college leadership, social justice issues in counselor education and other vital concerns in education and society.

## 2007-08 RESEARCH HIGHLIGHTS

■ **Boosting reading instruction for learning-challenged children.** A critical shortage of special education teachers, especially those with reading expertise, has lingered for more than 30 years—but help is on the way. With two grants from the U.S. Department of Education totaling \$2.8 million, UF special education researchers are launching a new master’s degree program with an emphasis in reading, and a novel, job-embedded, professional-development program to help practicing





teachers advance their literacy-instruction skills for learning-challenged students—without taking time off from their jobs.

■ **Preparing teachers for English language learners.** New UF research could cause a nationwide change in the way colleges prepare teachers to work with students who speak English as a second language. UF education researchers have received a \$1.2 million U.S. Department of Education grant to assess the effects that UF's own graduates from its elementary teacher preparation program (ProTeach) are having on English language learners in K-5 classrooms. With immigrant populations growing across the country, many states are looking for new ways to give teachers the second-language teaching tools they need, and are considering a teaching approach based on the Florida model.

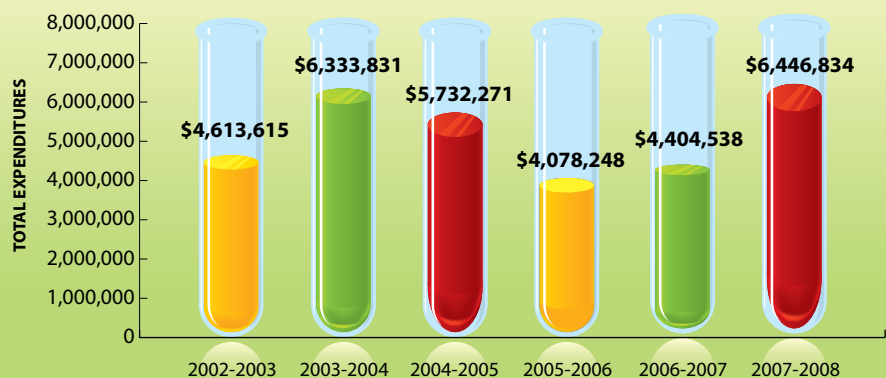
■ **What steers African American girls away from science and math?** Are you a “math person” or a “word person?” Ask almost anyone that question, and they can give you an instant answer. But what roles do race and gender play in all of this? This question is the focus of a new study

by three professors at the UF's College of Education. Funded by a \$439,000 grant from the National Science Foundation, the study will look into the ways African American girls are steered – and learn to steer themselves – away from science, mathematics and other technical subjects.

■ **Online learning: which teaching methods work best?** Aided by a 2007 grant from the AT&T Foundation, UF

researchers are studying the effectiveness of state-led virtual schools in 22 states—including Florida Virtual School in Orlando. The education technology specialists are conducting one of the first comprehensive surveys to determine precisely which online teaching techniques are the most effective. Preliminary results suggest that online learning and state-led virtual schools can be as effective as live classroom teaching methods.

**College of Education Research Expenditures: By Year**



T H E Y E A R I N P I C T U R E S



1

7



9



8



(Clockwise from top left:) (1) New 50-year alumna Elna Thompson enjoys a light moment at the college's Class of 1958 Grand Guard reunion; (2) Asst. Professor Luis Ponjuan (right) discusses his research poster with college supporters at the inaugural COE Faculty Research and Engaged Scholarship Showcase; (3) COE student ambassadors ham it up at the annual Homecoming Parade alumni-and-friends gathering; (4) Counselor Education Professor Edil Torres-Rivera drives home a point during a classroom lesson; (5) Science education instructor Griff Jones explains a science demonstration in his UF Teach class; (6) P.K. Yonge faculty endowment donor Babs Dalsheimer (right) shares a moment at the Scholarship of Engagement





2



3



4



# 2007-08



5



6

Banquet with P.K. Yonge instructor Kelly Dolan, recipient of the P.K. Yonge Faculty SOE Award; (7) center photo: Jamie Boykin shows off her decorated mortarboard before receiving her B.A.E. degree at spring 2008 commencement; (8) Associate Professor Colleen Swain discusses futuristic teaching trends at the COE's Florida Tomorrow capital campaign kickoff; (9) Gator offensive lineman Phil Trautwein, a COE master's student, mentors his P.K. Yonge middle school "buddy" as part of Camp G.A.T.O.R., a COE leadership and mentoring course for UF student-athletes and other interested students.

# Faculty RESEARCH AWARDS

List includes all active research projects for FY 2007-08. Asterisk by amount indicates new project funded during 2007-08.

## DEAN'S AREA

■ **T.B. Vernetson**  
**Co-PI: M.V. Bowie**  
*College Reach-out Program (CROP)*  
 State Community Colleges  
 September 2007 – August 2008  
**\$67,697\***

■ **Catherine Emihovich**  
*Norman Hall Renovation Project*  
 October 2007 – December 2013  
**\$396,000\***

## EDUCATIONAL ADMINISTRATION AND POLICY

■ **Linda Hagedorn**  
*Dual Pathways: Support and Training of Achieving the Dream*  
 Lumina Foundation for Education, Inc.  
 October 2006 – September 2009  
**\$1,602,000**



■ **M.E. Koro-Ljungberg**  
*ADHD: Detection and Service Use*  
 National Institutes of Health  
 July 2004 – April 2009  
**\$186,348**

■ **Walter Leite**  
*Combining latent growth modeling with propensity score matching to estimate the time-varying effect of student mobility*  
 American Educational Research Association  
 May 2008 – April 2009  
**\$20,000\***

## P.K. YONGE DEVELOPMENTAL RESEARCH SCHOOL

■ **Lynda Hayes**  
**Co-PI: Nancy Waldron (Education Psychology)**  
*Project CHOICE*  
 Florida Department of Education  
**\$286,712\***

■ **Lynda Hayes**  
**Co-PI: Rose Pringle**  
*LeTaS! Project: Let's Talk Science!*  
 Florida Department of Education  
 July 2007 – June 2008  
**\$383,883\***

■ **Fran Vandiver**  
*Individuals with Disabilities Education Act, IDEA, Part B Entitlement*  
 Florida Department of Education  
 July 2007 – June 2008  
**\$187,148\***

■ **Fran Vandiver**  
*Title IV, Safe and Drug Free Schools*  
 Florida Department of Education  
 July 2007 – June 2008  
**\$3,162\***

■ **Fran Vandiver**  
*School Safety/Emergency Preparedness—Emergency Notification Service*  
 Florida Department of Education  
 July 2007 – June 2008  
**\$1,305\***

■ **Fran Vandiver**  
*Title I Part A—Education of Disadvantaged Children and Youth, 2007-08*  
 Florida Department of Education  
 August 2007 – June 2008  
**\$112,843\***

■ **Lynda Hayes**  
**Co-PI: David Young**  
*Title II, Part D—Enhancing Education Through Technology (EETT)*  
 Florida Department of Education  
 December 2007 – June 2008  
**\$1,000\***

■ **Lynda Hayes**  
*Reading Leadership Team Grants to Florida School Districts*  
 Florida Department of Education  
 July 2007 – June 2008  
**\$1,000\***

## SPECIAL EDUCATION

■ **Mary Brownell**  
**Co-PI: Paul Sindelar**  
*National Center to Inform Policy and Practice in Special Education Professional Development*  
 U.S. Department of Education  
 October 2007 – September 2011  
**\$2,500,000**

■ **Mary Brownell**  
**Co-PI: Ann Bishop**  
*The Influence of Collaborative Professional Development Groups & Coaching on the Literacy Instruction of Upper Elementary Special Education Teachers*  
 U.S. Department of Education  
 July 2007 – June 2011  
**\$2,049,920\***



■ **Mary Brownell**  
**Zhihui Fang (STL)**  
*Preparing Reading Endorsed Secondary Special Ed (Project PRESS): Improving the Preparation of Personnel to Serve*  
 U.S. Department of Education  
 September 2005 – August 2009  
**\$200,000**

■ **Mary Brownell**  
*Building Capacity for Research in Teacher Education: Project RITE*  
 U.S. Department of Education  
 January 2005 – December 2008  
**\$800,000**





U.S. Department of Education  
January 2007 – January 2010

**\$785,559**

■ **Hazel Jones**  
*Project ACE: Autism Competencies for Endorsement*

U.S. Department of Education  
January 2006 – December 2009

**\$792,271**

*Special Education*  
U.S. Department of Education  
January 2006 – December 2009

**\$800,000**

■ **Jean Crockett**

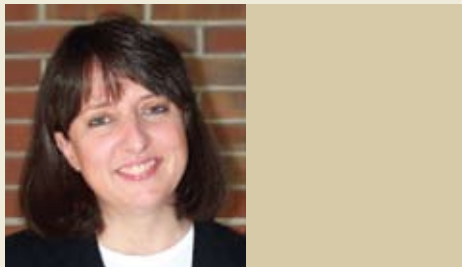
**Co-PI: David Quinn (EAP)**  
*Project Excel*  
U.S. Department of Education  
June 2007 – May 2011

**\$798,507**

■ **Maria Denney**

**Co-PI: Patricia Snyder**  
*Team Primary Service Provider Train the Trainers Project*  
Florida State University  
May 2008 – June 2008

**\$11,250\***



■ **Holly Lane**

**Co-PI: James McLeskey**  
*Project LITERACY: Literacy Intervention in Teacher Education for Reaching all Children and Youth*  
U.S. Department of Education  
January 2008 – December 2011

**\$800,000\***

■ **Holly Lane**

*Integrating Scientifically-Based practices in Reading Education: Project InSPIRE*  
U.S. Department of Education  
January 2005 – December 2008

**\$800,000**



■ **Diane Ryndak**

*Project SCIPP: (Significant Cognitive Disabilities Personnel Preparation): A Multi-University Consortium*  
U.S. Department of Education  
January 2007 – December 2010

**\$800,000**



■ **Cynthia Griffin**

**Co-PI: Joseph Gagnon  
Stephen Pape (STL)**  
*Project COMPUTE*  
August 2008 – August 2012

**\$788,291\***

■ **James McLeskey**

*State Personnel Development Grant*  
Florida Department of Education  
November 2007 – September 2008

**\$152,000\***

■ **James McLeskey**

*Personnel Development Partnerships*  
Florida Department of Education  
November 2007 – October 2008

**\$190,000\***

■ **Jeanne Repetto**

*Career Development and Transition (CDT)*  
Florida Department of Education  
September 2007 – August 2008

**\$790,000\***



■ **Paul Sindelar** *Invest: Optimizing Investments in Teacher Preparation Alternatives*  
U.S. Department of Education  
January 2005 – December 2008

**\$360,000**

■ **Stephen Smith**

**Co-PI: Ann Daunic**  
*Universal Cognitive-Behavioral Intervention for Elementary Students to Reduce Disruptive/Aggressive Behavior*  
U.S. Department of Education  
May 2006 – July 2010

**\$1,625,469**



■ **Hazel Jones**

**Co-PI: Alice Emery**  
*Project Cycle: Changing Young Children's Lives Through Education*

■ **Diane Ryndak**

*Project RISE: Researchers in Inclusion and Systems Change in Special Education: A Program to Prepare Leadership Personnel in*

**\$788,168**

# Faculty RESEARCH AWARDS

■ **Patricia Snyder**

*Impact of Professional Development on Preschool Teachers' Use of Embedded-Instruction Practices*  
U.S. Department of Education  
July 2007 – February 2010

\$1,288,510\*



■ **Thomas Dana**

*Florida Teach: Increasing the Quantity & Quality of Mathematics & Science Teachers in Florida*  
National Math and Science Initiative  
November 2007 – July 2012

\$2,400,000\*

■ **Thomas Dana**

*Project SOAR: Science: Optimizing Academic Returns*  
Panhandle Area Educational Consortium  
June 2007 – August 2008

\$148,212\*

■ **Kara Dawson**

**Co-PI: Cathy Cavanaugh (STL)**  
*Digital Strategies for Science Teaching & Learning*  
Union County  
July 2007 – July 2008

\$127,487\*

■ **Rick Ferdig**

*Fathers as In-Home Trainers of Autistic Children*  
National Institute of Health  
August 2005 – May 2009

\$45,594



■ **Patricia Snyder**

*TEIDS Plus: Integrating Quality Assurance and Data-Based Decision Making to Enhance IFSP Quality, Implementation, and Child and Family Outcomes*  
U.S. Department of Education  
August 2007 – June 2011

\$284,458\*

■ **Patricia Snyder**

*Examining the Potential Efficacy of a Classroom-Wide Model for Promoting Social Emotional Development & Addressing Challenge Behavior in Preschool Children With & Without Disabilities*  
U.S. Department of Education  
August 2007 – February 2008

\$136,572\*

## SCHOOL OF TEACHING AND LEARNING



■ **Thomas Dana**

**Co-Pi: Stephen Pape**  
*Florida PROMISE*  
University of South Florida  
January 2008 – June 2008

\$1,825,053\*

■ **Rick Ferdig**

*Establishing a Framework to Strengthen Virtual High Schools: A Collaborative Initiative to Improve Student Performance and Quality of Instruction*  
Bell South Foundation  
May 2006 – May 2011

\$600,000

■ **Stephen Pape**

*Classroom Connectivity in Promoting Math and Science Achievements*  
Ohio State University Research Foundation  
August 2006 – May 2009

\$212,235

■ **Stephen Pape**

*Examining the effects of using the TI-Nspire in Algebra I and Algebra II to support student understanding of Rational Functions and Quadratic Relations*  
Texas Instruments, Inc.  
December 2007 – June 2008

\$1,500\*



■ **Rose Pringle**

**Co-PI(s): Thomasenia Adams  
Cirecie West-Olatunji (Couns. Ed)**  
*An Investigation of African American Girls' Positionality in Science and Mathematics*  
National Science Foundation  
September 2007 – August 2010

\$439,597\*



■ **Sevan Terzian**

*Enlisting Science Education for National Strength: An Examination of Historical Precedents*  
Spencer Foundation  
June 2008 – May 2009

\$39,075\*



■ **Elizabeth Yeager-Washington**

*Critical Analysis of Constitutional Issues with Implications for Social Studies Methods Courses: A Summer Institute for Methods Professors*  
Center for Civic Education  
February 2008 – September 2008

\$72,774\*



# Laurels FACULTY / STUDENTS / ALUMNI

## FACULTY – NATIONAL RECOGNITION

**Mary Brownell** (*Special Ed*) – named by the American Educational Research Association (AERA) as one of the top 10 reviewers in 2007 for the *American Educational Research Journal/Social and Institutional Analysis*

**Dale Campbell** (*Ed Admin & Policy*) – Co-editor, *SACS-SACJTC Journal*



**Kara Dawson** (*Teaching & Learning*) – one of three faculty chosen for the B.O. Smith Research Professorship

**Richard Ferdig** (*Teaching & Learning*) – 2008 UF Research Foundation Professorship

**Cynthia Griffin** (*Special Ed*) – one of three faculty chosen for the B.O. Smith Research Professorship

**Larry Loesch** (*Counselor Ed*) – 2008 COE Lifetime Achievement Award

**Dorene Ross** (*Teaching & Learning*) – named one of two Irving and Rose Fien Professors in Education

**Patricia Snyder** (*Special Ed*) – first occupant of the David Lawrence Jr. Endowed Chair in Early Childhood Studies

**Sevan Terzian** (*Teaching & Learning*) – 2008 University Teacher of the Year; COE Undergraduate Teacher of the Year

## STUDENTS

**Carolyn Bellotti** (*Teaching & Learning*) – COE Outstanding Undergraduate Professional Practice Award

**Michael Brubaker** (*Counselor Ed*) – Sandhu Multicultural Counseling and Diversity Student Research Award

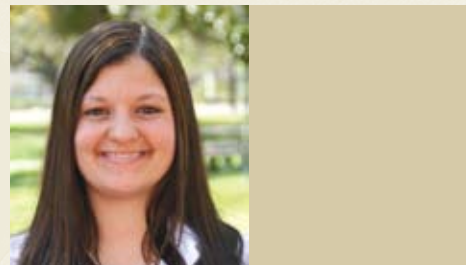
**Andrew Grunzke** (*Teaching & Learning*) – COE Outstanding Graduate Research Award

**Jessica Harster** (*Teaching & Learning*) – COE Outstanding Undergraduate Professional Practice Award

**Melinda Leko** (*Special Ed*) – 2008 Dissertation Award from the Council for Exceptional Children's Teacher Education Division

**Adriane McGhee** (*Teaching & Learning*) – COE Outstanding Graduate Leadership Award

**Emily Peterek** (*Teaching & Learning*) – UF Graduate Student Teaching Award



**Sarah Ryals** (*Teaching & Learning*) – COE Outstanding Undergraduate Leadership Award

**Katie Tricarico** (*Teaching & Learning*) – COE Outstanding Graduate Research Award

**Summer Yacco** (*Counselor Ed*) – UF Multicultural Student Award

## ALUMNI

**Mechelle De Craene** (*MED '03, EDS '08*) – Cable's Leaders in Learning Award for creativity and excellence in teaching

**Kelly Fykes** (*MED '98*) – UF Outstanding Young Alumni Award

**Madlyn Hanes** (*BAE '69, PHD '76*) – COE Distinguished Alumna Award

**Beverly Eaves Perdue** (*MED '74, PHD '76*) – elected first female governor of North Carolina



**Andrea Dixon** (*Counselor Ed*) – Young Emerging Leader Award from Multicultural Counseling and Development

**Catherine Emihovich** (*Dean's Office*) – elected president of the Holmes Partnership

**Richard Ferdig** (*Teaching & Learning*) – Editor-in-Chief of *International Journal of Gaming and Computer-Mediated Simulations*

**Michael Garrett** (*Counselor Ed*) – named Fellow, Association for Specialists in Group Work

**Diana Joyce** (*Ed Psych*) – Junior Faculty of Year Award, Psychological Corp. and National Association of School Psychology Trainers

**Cirecie West-Olatunji** (*Counselor Ed*) – Community Service Award from Association of Black Psychologists; Ohana Award for outstanding scholarship and leadership from Counselors for Social Justice (ACA)

**R. Craig Wood** (*Ed Admin & Policy*) – new executive director of American Education Finance Association

## FACULTY – STATE, UF AND COLLEGE HONORS

**Thomasenia Adams** (*Teaching & Learning*) – Mary L. Collins Award, from Fla. Association of Teacher Educators (FATE) for outstanding contributions to the profession

**Mary Brownell** (*Special Ed*) – named one of two Irving and Rose Fien Professors in Education

**Mary Ann Clark** (*Counselor Ed*) – 2008 COE Graduate Teacher of the Year; one of three faculty chosen for the B.O. Smith Research Professorship



Dean Emihovich with Eric J. Smith

**Eric J. Smith** (*EDD '84*) – COE Alumnus Achievement Award

**Fred Spooner** (*PHD '80*) – COE Alumnus Achievement Award

**Lunetta Williams** (*PHD '05*) – UF Outstanding Young Alumni Award

# Engaged Scholarship

## *Taking public scholarship seriously*

Each year, more and more of our faculty and students are engaging in public scholarship—leaving our campus to collaborate with Florida school districts and communities in creative education research and academic activities. The College has broadened its concept of scholarship in the 21<sup>st</sup> century to reflect the issues and concerns of society at large as a way of contributing to the public good.

Some of the year's most noteworthy efforts in engaged scholarship by educators and students from UF and local public schools were celebrated at our 6<sup>th</sup> annual Scholarship of Engagement Banquet last spring. The College recognized several local educators, university professors and UF education faculty and graduate students whose scholarly activities are yielding an immediate positive impact on teaching and learning in the classroom or on the community. Here is a sampling of the 2008 Scholarship of Engagement Awards received by College faculty and students, and community organizations:

**en-gaged schol-ar-ship**  
*noun*<sup>1</sup> – Creative research and academic activities—often carried out in cooperation with community partners—that contribute directly to improved education and address important social and community issues.

— *Syn: public scholarship*

on crucial issues in science education and faculty retention.

### **Faculty Award—Educational Psychology**

■ **Diana Joyce**, *Assistant Scholar*  
For a child who is struggling in school, competent and perceptive school psychologists can make all the difference. UF's practicum program is vital to the preparation of school psychologists, and under Joyce's direction, the program has doubled in size to include five school districts and seven clinics.

### **Faculty Award—Counselor Education**

■ **Sondra Smith-Adcock**, *Associate Professor*  
Throughout her career, Smith-Adcock has focused her research on interventions to help marginalized young people. She has looked at the role of peers in the lives of girls in the juvenile justice system; called attention to a lack of Spanish-speaking counselors in Florida schools; and found new ways counselors can help culturally diverse groups of low-income students.

### **Faculty Award—School of Teaching and Learning**

■ **Nancy Dana**, *Professor*  
As director of UF's Center for School Improvement, Dana has worked with schools throughout Florida to help practitioners and principals systematically study pressing issues they face while working in high-need and high-poverty schools. She has been a leader in the movement to encourage teachers and principals to take charge of their own professional development.

### **Faculty Award—Special Education**

■ **Hazel Jones**, *Associate Professor*  
Improving the quality of preschools by engaging teachers in quality professional development has been a key focus for Jones. In her work with Baby Gator Child Development and Research Center, the Early Learning Coalition and the Northeast Florida Education Consortium's Early Reading First project, she has worked tirelessly to help preschool teachers employ research-based practices to promote young children's language and literacy development.

### **Graduate Student Award**

■ **Christopher Mullin**, *Educational Administration and Planning*  
In these economically trying times, institutions of higher education are having to make tough decisions that affect the lives of young people. Mullin has studied and published numerous works on funding issues affecting community colleges, which are the gateway to higher education for millions of people. Mullin was also deeply involved in the launch of the *Florida Journal of Educational Administration and Policy*, UF's new journal for research on higher education issues.

### **P.K. Yonge Developmental Research School Award**

■ **Kelly Dolan**, *Instructor*  
As a first-, third- and fourth-grade teacher, Dolan has worked to acquire National Board Certification, and actively participates in unique professional development opportunities. She has been a Florida Reading Initiative trainer since 2002 and a regular host of PKY Research in Action visitors. Her work has inspired many teachers to reconsider their approaches to comprehension, vocabulary and decoding instruction.

### **Community Award**

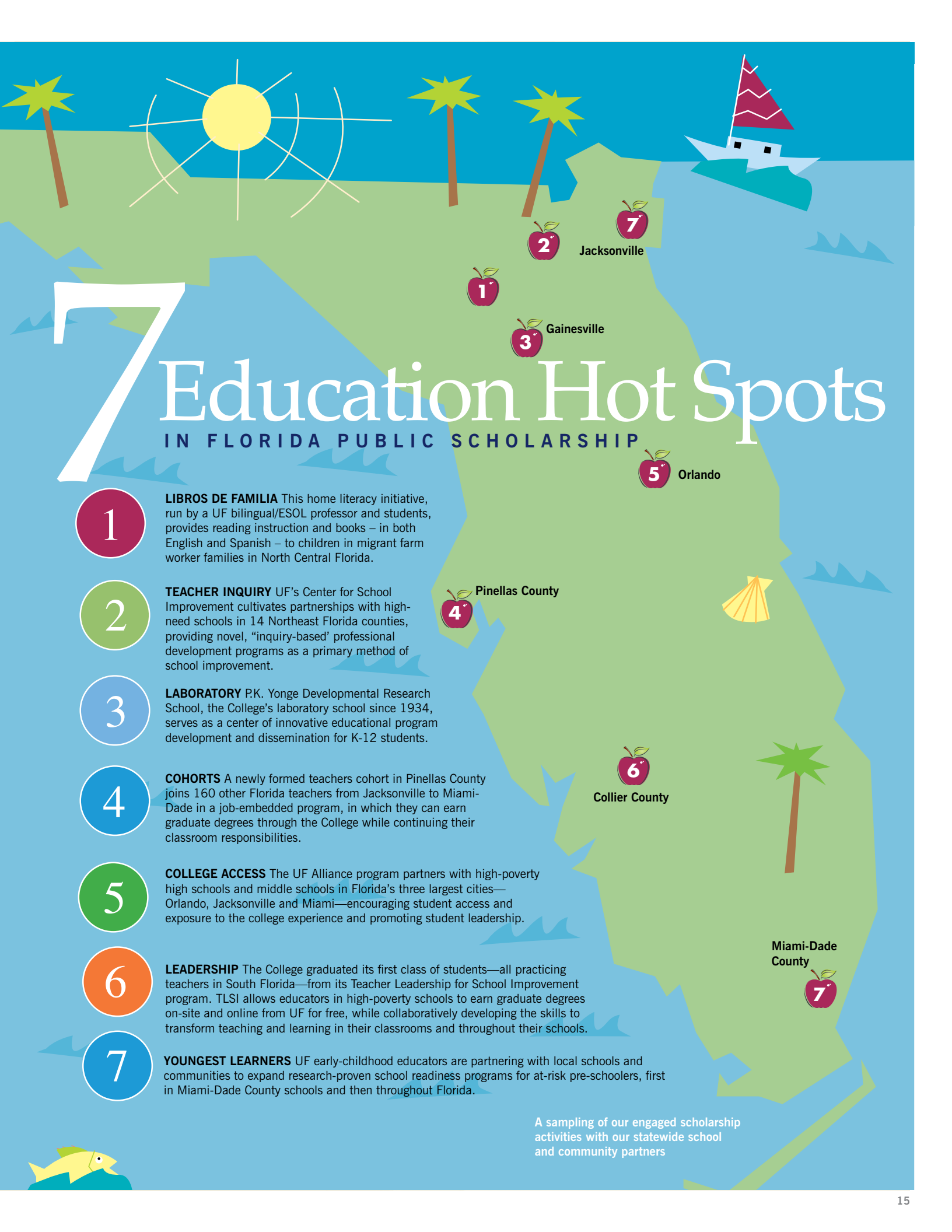
■ **Mercantile Bank**  
Through the leadership of its president, Andy Cheney, Mercantile Bank has made sustained investments in improving the quality of teaching and learning in Florida. The bank has worked with UF's Lastinger Center for Learning to launch an innovative professional development initiative for teachers in high-need schools.



### **Faculty Award—Educational Administration and Policy**

■ **Luis Ponjuan**, *Assistant Professor*  
Every college administrator knows that African-Americans and Latinos are underrepresented in higher education – and that this state of affairs is a serious social justice issue. Ponjuan's work addresses the reasons behind the disparity – at both the faculty and student level – and sheds light





# 7 Education Hot Spots

## IN FLORIDA PUBLIC SCHOLARSHIP

1

**LIBROS DE FAMILIA** This home literacy initiative, run by a UF bilingual/ESOL professor and students, provides reading instruction and books – in both English and Spanish – to children in migrant farm worker families in North Central Florida.

2

**TEACHER INQUIRY** UF's Center for School Improvement cultivates partnerships with high-need schools in 14 Northeast Florida counties, providing novel, "inquiry-based" professional development programs as a primary method of school improvement.

3

**LABORATORY** P.K. Yonge Developmental Research School, the College's laboratory school since 1934, serves as a center of innovative educational program development and dissemination for K-12 students.

4

**COHORTS** A newly formed teachers cohort in Pinellas County joins 160 other Florida teachers from Jacksonville to Miami-Dade in a job-embedded program, in which they can earn graduate degrees through the College while continuing their classroom responsibilities.

5

**COLLEGE ACCESS** The UF Alliance program partners with high-poverty high schools and middle schools in Florida's three largest cities—Orlando, Jacksonville and Miami—encouraging student access and exposure to the college experience and promoting student leadership.

6

**LEADERSHIP** The College graduated its first class of students—all practicing teachers in South Florida—from its Teacher Leadership for School Improvement program. TLSI allows educators in high-poverty schools to earn graduate degrees on-site and online from UF for free, while collaboratively developing the skills to transform teaching and learning in their classrooms and throughout their schools.

7

**YOUNGEST LEARNERS** UF early-childhood educators are partnering with local schools and communities to expand research-proven school readiness programs for at-risk pre-schoolers, first in Miami-Dade County schools and then throughout Florida.

A sampling of our engaged scholarship activities with our statewide school and community partners

# Alumni & Giving

## Private Giving By Source

	# DONORS	TOTAL GIFTS
<b>Foundations</b>	13	\$3,220,500
<b>COE Alumni</b>	1,221	\$440,752
<b>Other UF Alumni</b>	169	\$320,674
<b>Friends</b>	251	\$158,983
<b>State Match</b>	1	\$50,025
<b>Corporations</b>	8	\$17,240
<b>Parents</b>	25	\$8,855
<b>UF Faculty</b>	7	\$6,740
<b>Other</b> <i>(organizations, students, staff, community funds)</i>	9	\$16,859
<b>TOTAL</b>	<b>1,704</b>	<b>\$4,240,628</b>



Everyone knows we are living in hard times. The meltdown of America's financial system, high gas prices, federal and state budget shortfalls and other economic crises dominate the daily headlines. The financial strife has touched all of us in some way. At UF, the College of Education has endured two budget callbacks over the past two years totaling nearly \$1.7 million—more than 10 percent of our yearly state appropriations. Yet, thanks to the concern and loyalty of our alumni and friends of education, the level of private giving and charitable support of the College amazingly continues to grow.

The College last year received \$4.2 million in charitable gifts, private grants and bequests from some 1,700 alumni and friends. That's \$1 million—or nearly a third—more than the previous year. Two private foundations—the W.K. Kellogg Foundation and the Helios Education Foundation—contributed a lion's share with more than \$1 million each. Alumna Betty Jean S. Lewis (BSE '54)

of Jacksonville made the year's largest single gift by an individual, investing more than \$200,000 into autism education research. Loyal alumna Mary L. Andrew (BAE '60) of Lakeland, Fla., gave for the 26<sup>th</sup> consecutive year, longer than any other current donor.



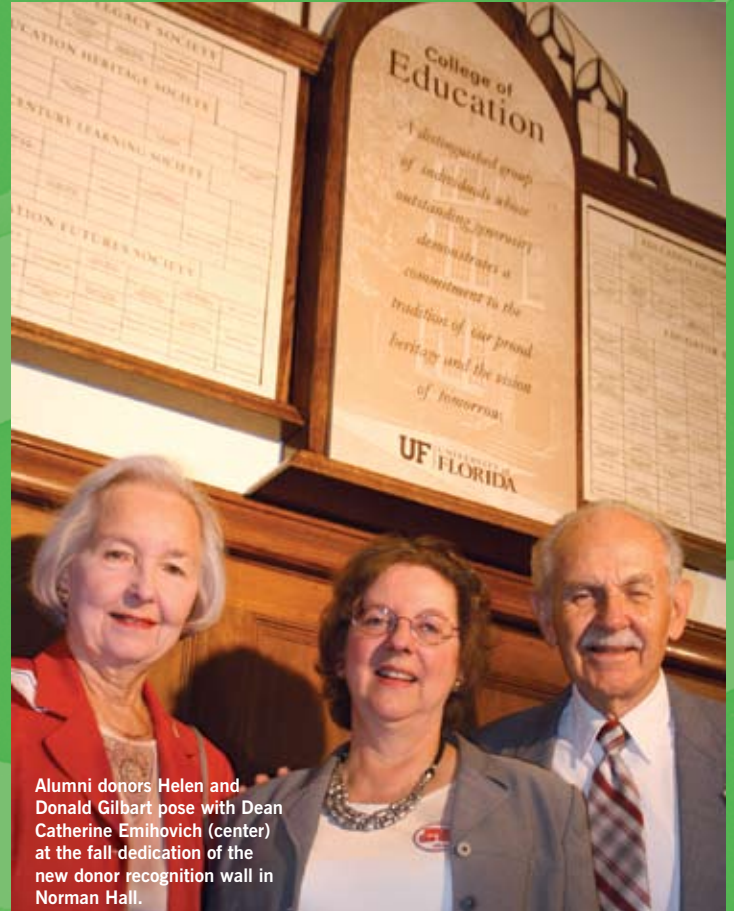
**Betty Jean S. Lewis**

*...gave largest individual gift*



## Alumni & Giving Summary

	2006-07	2007-08
<b>Total Gifts Amount</b>	\$ 3.2 million	\$ 4.2 million
<b>Total Number Gifts</b>	2,355	2,588
<b>Total Number Donors</b>	2,707	1704
<b>Total COE Alumni Donors</b>	1,239	1,221
<b>Total COE Living Alumni</b>	27,112	27,986
<b>Total COE Alumni in UF Alumni Association</b>	3,439	3,245
<b>Best Giving Percentage</b> .....	Class of 1981 (7.5%)	
<b>Best Giving Overall</b> .....	Class of 1954 (\$202,986)	



Alumni donors Helen and Donald Gilbert pose with Dean Catherine Emihovich (center) at the fall dedication of the new donor recognition wall in Norman Hall.

Interest earned last year on \$4.7 million in cumulative endowments and annual gifts enabled us to award nearly \$85,850 in scholarships and fellowships to 32 of our top students. Alumnus Norman Nelson (BAE '66) and his wife Margaret, also from Jacksonville, created a new \$500 (minimum) annual scholarship in their name for deserving students in counselor education. Endowed scholarships and fellowships enable students to pursue their life dreams in specialty areas including educational administration, mathematics and science, social studies, reading, bilingual education and educational psychology.

As part of UF's historic *Florida Tomorrow* capital campaign, the College launched its most ambitious fund-raising initiative ever. Although the campaign runs through 2012, the College has already received more than \$18 million in gifts and pledges towards its \$20 million goal—again demonstrating the generosity of our College faithful. Our top fundraising priority calls for renovating and

Our top fundraising priority calls for renovating and expanding historic Norman Hall to create an education research and technology complex.

expanding historic Norman Hall to create an education research and technology complex, where researchers from multiple

disciplines would adapt the latest information technologies to transform how education has been traditionally delivered.

Our gratifying spike in private giving occurred despite our donor numbers dropping by 1,000 individuals—a decline we believe is related to the unsettling economic climate. Indeed, 2008 will be remembered as the year that “fewer gave more.” We’re confident that many regular donors will jump back aboard when the economy rebounds, and that many new prospective donors will discover the personal satisfaction and return on their investment that a gift to the College can generate.

Never has the charitable giving of our alumni and friends been so critical. And, to our donors, never have we been so uplifted by your contributions in this critical time of need.

## Thank You So Much For Your Support!

# Giving Honor Roll THANK YOU FOR GIVING

The College of Education is pleased to acknowledge its many benefactors who supported the College during the 2007-08 fiscal year, which ran from July 1, 2007 through June 30, 2008. To you, our donors, your generous giving has supported scholarships, research, teaching, supplies, special programs and activities, and much more as we strive to transform education in today's complex society. Limited space prevents us from recognizing all of our loyal supporters

here, but a complete Honor Roll of Giving is available online at [www.coe.ufl.edu/HonorRoll](http://www.coe.ufl.edu/HonorRoll).\*

Special recognition goes to the Dean's Leadership Circle of donors, which includes alumni, parents, friends and corporate benefactors who made gifts totaling \$1,000 or more to the College during fiscal 2007-08. The College sincerely thanks the following Dean's Leadership Circle donors whose giving

has assisted students and promoted our major strategic initiatives, especially in these difficult economic times.

***\*The Honor Roll of Giving was compiled as accurately as possible from university records, but occasionally errors can occur. If there are any discrepancies, please contact the College of Education Development Office at 352.392.0728, ext. 600, or toll-free at 866.773.4504, ext. 600; or via email at [development@coe.ufl.edu](mailto:development@coe.ufl.edu).***

## Dean's Leadership Circle (2007-08) \$1,000 and up in annual giving

### LIFETIME MEMBERS

William & Robbie Hedges  
Allen & Delores Lastinger  
Frederick & Christine (d) Shewey



Fred Shewey with daughter-in-law Kathy

Helios Education Foundation  
W.K. Kellogg Foundation  
Wachovia

### \$1,000,000 or more

Helios Education Foundation  
W. K. Kellogg Foundation

### \$100,000 - \$999,999

William & Gail Bolser  
Thomas\*\* & Connie Bronson  
Beverly & Walter Brown  
The Education Foundation of Collier County  
Allen\*\* & Delores\* Lastinger  
The Lastinger Family Foundation  
Betty Jean S. Lewis\*  
James (d) & Janice Moran  
The Jim Moran Foundation, Inc.  
John\*\* & Anne Shermeyen  
Wachovia Foundation

### \$50,000 - \$99,999

Henry\*\* & Diane Graham  
Naples Children & Education Foundation  
Norma Olsen\* (d)  
Alan & Barbara Pareira

### \$10,000 - \$49,999

Donald\* & Helen\* Gilbert  
Lincoln & Lillian Hall  
James\*\* Horner  
Carlos & Maite Martinez  
Morgan, Keegan & Co., Inc.  
Norman\* & Margaret Nelson  
The Phelps Foundation Trust  
School Board of Miami-Dade County  
Frances C. & William P. Smallwood Foundation

### \$1,000 - \$9,999

Harvey\* & Gerness Alpert  
Barbara\* & Richard Anderson IV  
Johnny\*\*\* & Betty Arnette  
Gilles Blais\*  
Christopher Brkich\*  
Joseph & Phyllis Bryant  
A. H. Burnett Foundation  
Community Foundation of Tampa Bay, Inc.  
ConocoPhillips, Inc.  
Nancy & Thomas Dana  
Delta Air Lines Foundation  
Daniel\*\* & Janet Dennison  
Peter & Carole\* DeSoto  
Billye\* & Joe Dowdy  
Dr. Phillips, Inc.  
Cathy\* Durrett-Filusch & Edward Filusch

Catherine & Ronald Emihovich  
Deborah Gaw & Robert\*\* Wallace  
Jeffrey Gorrell\*  
Harris Foundation  
Mary Henderson\*  
Impact II  
Sharon\* & Edward Jones  
Kenneth & Janet Keene  
J. David & Kathleen\* Leander  
Donna Lutz\*  
John & Elizabeth\* Mallonee  
Mallonee Family Foundation, Inc.  
Carol Meyer\*\*  
Lindsay\*\* Mickler & John Elbare  
Robert & Joy Mogyorosy  
John\*\* & Nancy Mullett  
Bernard Oliver  
W. M. Palmer Co., Inc.  
Leslye Pennypacker\*\*  
Louetta\*\* & Pete Peterman  
Walter & Bonnie Pike  
Paco Rabell  
Louise\* & Robert Roberts II  
Sanibel Leadership Assn.  
Karen\* & Richard\*\* Scarborough  
Catherine Solich  
Target Copy of Gainesville, Inc.  
Theresa\* & William Vernetson  
Jim White  
Jo Ann\* & Joseph White  
Willa\* & Edward Wolcott  
Roger\* Yoerges & Denise Esposito

\*College of Education alum

\*\* P.K. Yonge Developmental Research School graduate

\*\*\*CoE & PKY alum



## DEGREE PROGRAMS AND ENROLLMENT

ACADEMIC PROGRAM	STUDENTS ENROLLED (FALL 2007)	DEGREES AWARDED (2007-08)
<b>Counselor Education (177 total enrollment)</b>		
School Counseling and Guidance	52	12
Marriage and Family Counseling	54	14
Mental Health Counseling	71	20
<b>Educational Administration &amp; Policy (235)</b>		
Educational Leadership	127	27
Higher Education Administration	84	11
Student Personnel in Higher Education	24	10
<b>Educational Psychology (96)</b>		
Educational Psychology	22	1
Research and Evaluation Methodology	14	2
School Psychology	60	21
<b>School of Teaching and Learning (1,095)</b>		
Curriculum and Instruction	259	45
Early Childhood Education	27	00
Elementary Education	718	291
English Education	25	28
Foreign Language Education	1	0
Foundations of Education	6	2
Mathematics Education	11	6
Reading Education	9	2
Science Education	7	8
Social Studies Education	32	30
<b>Special Education (207)</b>		
Special Education	207	81
<b>COLLEGE TOTAL</b>	<b>1,810</b>	<b>611</b>

## Administrative & Departmental Listings

### ■ Administration

CATHERINE EMIHOVICH  
Professor and Dean  
(352) 392-0728, ext. 226  
cemihovich@coe.ufl.edu

TOM DANA  
Professor and  
Associate Dean  
for Academic Affairs  
(352) 392-0728, ext. 264  
tdana@coe.ufl.edu

JOHN KRANZLER  
Professor and  
Interim Associate Dean  
for Research and  
Faculty Development  
(352) 392-0723, ext. 236  
jkranzler@coe.ufl.edu

THERESA VERNETSON  
Lecturer and  
Assistant Dean  
for Student Affairs  
(352) 392-1058, ext. 400  
tbv@coe.ufl.edu

### ■ Department Chairs

ELIZABETH "BUFFY" BONDY  
Professor and Interim Director  
Teaching and Learning  
(352) 392-9191, ext. 247  
bondy@coe.ufl.edu

MICHAEL GARRETT  
Professor and Acting Chair  
Counselor Education, Educational Admin.  
and Policy, Educational Psychology  
(352) 392-2391, ext. 356  
mgarrett@coe.ufl.edu

JAMES MCLESKEY  
Professor and Acting Chair  
Early Childhood, School Psychology,  
Special Education  
(352) 392-0701, ext. 278  
mcleskey@coe.ufl.edu

### ■ Affiliate, Center & Program Directors

#### Center for School Improvement

NANCY DANA  
Professor and Director  
(352) 392-0728, ext. 299  
ndana@coe.ufl.edu

#### Lastinger Center for Learning

DONALD PEMBERTON  
Lecturer and Director  
(352) 392-0726, ext. 222  
dpembernton@coe.ufl.edu

#### National Center to Inform Policy & Practice in Special Education Professional Development (NCIPP)

MARY BROWNELL  
PAUL SINDELAR  
Professors and Co-Directors  
(352) 392-0701, ext. 267  
ncipp@coe.ufl.edu

#### UF Alliance

BERNARD OLIVER  
Professor and Director  
(352) 392-0728, ext. 315  
beoliver@coe.ufl.edu

#### P. K. Yonge Developmental Research School

FRAN VANDIVER  
Lecturer and Director  
(352) 392-1554, ext. 222  
franvan@pky.ufl.edu



## ACKNOWLEDGEMENTS

The College of Education's news and communications office extends its deepest appreciation to the following people for all their help during the production of the 2007-08 annual report:

Alyson Adams, Thomasenia Adams, Ellen Amatea, Diane Archer-Banks, Elizabeth "Buffy" Bondy, Mary Brownell, Mike Carter, Elayne Colon, Penny Cox, Nancy Dana, Tom Dana, Dimple Malik Flesner, Michael Garrett, Linda Serra Hagedorn, Lynda Hayes, John Kranzler, Debra Lee, Marcia Marwede, James McLeskey, Diana Melendez, Leslie Merryman, David Miller, Jodi Mount, Bernard Oliver, Jenny Palgon, Don Pemberton, Marta Pollitt, Ana Puig, Nekita Robinson, Troy Sadler, Chris Sessums, Mark Shermis, Patricia Snyder, Paul Sindelar, Whitney Shadowens, Fran Vandiver, Theresa Vernetson, Patricia Wlasuk, Ron Wright

**University of Florida College of Education  
P.O. Box 117044, Gainesville, FL 32610  
(352) 392-0728**

Produced by COE News & Communications  
Larry Lansford: Director/Editor/Writer  
JS Design Studio: Design  
Kristen Bartlett Grace, Ray Carson,  
Larry Lansford: Photography

[www.education.ufl.edu](http://www.education.ufl.edu)



College of Education  
P.O. Box 117044  
Gainesville, FL 32610

Non-profit org.  
**PAID**  
Jacksonville, FL  
Permit No. 4390