



GREEN THIRD EDITION GUIDE

A Gator's Guide to Sustainable Living

HEY! GREEN GATOR,

This Green Guide was created by students, for students, to let you know all about sustainable living at the University of Florida. But what does that mean? Sustainability is commonly defined as meeting the needs of the present without compromising the ability of future generations to meet their own needs. Simply put, sustainability means not using up our resources faster than the Earth can replace them. It means environmental, economic, and social well-being.

And why are we reaching out to you? We already know some of UF and Gainesville's secrets to sustainable living and we're happy to share. More importantly, we've prepared this guide because everyone is affected by the decisions each of us makes every day. And whether this guide encourages you to change a few light bulbs in your house or inspires you to join the sustainability movement at UF, we want you to have the resources to get involved.

This guide contains information that will be useful to you during your entire stay at UF, so check it out and keep it handy. Enjoy!

Green is good,

The Office of Sustainability Interns.

OFFICE OF SUSTAINABILITY MISSION STATEMENT

The mission of the Office of Sustainability is to make the University of Florida – in its operations, education, research, and outreach – a model of sustainability, integrating the goals of ecological restoration, economic development, & social equity.

In pursuing this mandate, the Office of Sustainability will encourage and facilitate the collaborative efforts of faculty, students, and staff to generate knowledge, acquire skills, develop values, and initiate practices that contribute to a sustainable, high quality of life on campus, in the state of Florida, and across the globe.

TABLE OF CONTENTS

“Sustainability explores meeting the needs of the present without compromising the ability of future generations to meet their needs.”

1 WELCOME

OUR MISSION, VISION,
AND STRATEGIC PLAN

3 GO GREEN

SUSTAINABLE LIVING

9 FLORIDA GOES GREEN

THE UNIVERSITY'S EFFORTS

11 GREEN EDUCATION

COURSES AND READING

13 GREEN MEDIA

COURSES AND READING

15 GET INVOLVED

SUSTAINABLE STUDENTS ARE
ACTIVE STUDENTS

17 GREEN MARKET

RESTAURANTS AND BUSINESSES

19 GREEN ACTIVITIES

GREEN THINGS TO DO

21 VOLUNTEER RESOURCES

VOLUNTEER OPPORTUNITIES

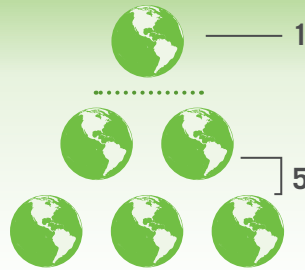
23 GREEN TRANSPORTATION

TRANSPORTATION TIPS

DON'T MISS THE POSTER INSIDE!

GO GREEN

If everyone in the world used as many resources as the average American. . .
We would need 5 planet Earths!



The problem is, we only have one. We must consume fewer resources if future generations are to survive. Try out some of the ideas listed below to reduce your footprint on the Earth, and make your life more sustainable. Every little action counts, so do your part!

VOTE

By voting, everyone can have a say in the direction the city, state, and country is headed, and elected officials can be held accountable for the decisions they make.

Register to vote in Alachua County at the Supervisor of Elections Office, or pick up a registration form at the Post Office, Public Library, or the Student Government Office on the 3rd floor of the Reitz Union.

CLEAN GREEN

Many cleaning products have all sorts of chemicals in them that are not only dangerous for humans but can also get into and pollute the water system. However, there are alternatives. "Green" cleaning products are usually made from non-toxic and biodegradable materials, and often come in recycled packaging. Read the label to make sure that they are not made with toxic or petroleum-based ingredients and/or look for the *Green Seal* label. Common brands include 7th Generation and Simply Clean.

COMPOST

You can compost anything that was ever a plant (no meat and no dairy!). Regardless of where you live, there is a composting option for you. If you live in a house, you can put your scraps in a backyard bin. If you live in an apartment, you can either have a small compost bin on your balcony or put a worm composter under your sink. For more information, check out compostinfo.com or call 352-334-2130.

RECYCLE

CITY OF GAINESVILLE AND ON CAMPUS

We recycle all plastic with a #1 or #2 on the bottom, aluminum and tin cans, glass jars and bottles, junk mail, office paper, newspaper, magazines, phone books, and corrugated cardboard. Make sure to rinse out cans, jars, and bottles and remove lids. Remember, do not throw any non-recyclables into the bins. UF even has places to recycle batteries, ink cartridges, and Styrofoam packaging peanuts! Check out *Campus Copy, Fax & Pack* on the ground floor of the Union. And see the Sustainable Campus map at campusmap.ufl.edu for on-campus recycling locations. Almost 50% of UF waste is paper! There are paper recycling bins in every building.

RESIDENCE HALLS

Among other things, the Inter-Residence Hall Association (IRHA) and the Department of Housing are placing blue recycling bins in each room of many of the residence halls on campus. You can recycle office paper in most residence hall lobby areas. During move-out at the end of the semester look for collection boxes in the lobby areas to donate your old clothes, nonperishable goods, and even furniture to local charities.

FRATERNITY OR SORORITY HOUSE:

Greeks Going Green is an organization on campus dedicated to making it easier for Greeks to recycle and become more sustainable. Visit this website for more information:
ufgreeksgoinggreen.wordpress.com

HOUSES

Gainesville offers blue and orange bins for residents that are collected every week along with regular trash. Visit this website for more information:
www.cityofgainesville.org

IN AN APARTMENT

Apartment buildings in Gainesville are required to have recycling bins. Recycling bins are often around the back of complexes by the dumpsters. If your apartment does not provide them, call this number to report it: 352-334-2130.



Polyethylene Terephthalate (PETE)

Soda, water, beer bottles; salad dressing bottles; peanut butter containers; jam jars



High-density Polyethylene (HDPE)

Milk, juice & water bottles; trash and retail bags; laundry detergent; bleach containers



Old Corrugated Cardboard (OCC)

Corrugated: layer of "fluting" between 2 sheets of cardboard
 Widely used for packaging and shipping; toy boxes



Recycled Content

Indicates recycled content. A percentage within the logo may show amount recycled.

FSC



Forest Stewardship Council Certified

Indicates the producer is complying with sustainable forestry practices.



EAT AND SHOP GREEN

- **BUY LOCAL FOOD.** The average meal travels 1500 miles from farm to fork.
- **BUY GROCERIES AT THE FARMERS MARKET** or Ward's Supermarket where local farmers sell their goods. (See page 17)
- **VISIT FARMERS MARKETS.** Located downtown every Wednesday from 4 pm to 7 pm. Saturdays at the intersection of Highway 441 and 34th Street. Tuesdays from 2:00 pm to dusk in Butler Plaza (seasonally). Other farmers markets in our area are listed here:
www.slowfoodgainesville.org/resources
- **GROW YOUR OWN FOOD.** UF has garden plots on campus and at the organic garden on 23rd Terrace. For information on how to rent a plot, visit <http://uf.organic.gardens.googlepages.com/>.
- **EAT LESS MEAT.** It takes 5000 gallons of water to create a pound of meat. It takes 30 gallons to create a pound of fruits, vegetables or grains. By consuming less meat and more fruits and vegetables, you will be using fewer resources and eating healthier.
- **GET A VEGETARIAN KRISHNA LUNCH** for a \$4 donation every weekday in the Plaza of the Americas from 11 am to 2 pm. You can even save 25 cents if you bring your own plate, cup, and utensils.
- **BUY ORGANIC PRODUCTS.** Not only can your apples and oranges be certified organic, but your cotton t-shirts can too!
- **BRING YOUR OWN BAG TO THE GROCERY STORE OR MARKET.** Be sure to return used plastic bags and egg cartons to the bins in front of Publix.
- **LOOK FOR THE GREEN LEAF SIGNS** at Fresh Food Co. and Gator Corner dining halls on campus for locally grown produce.
- **BUY RECYCLED** and products sold in bulk, to reduce packaging.



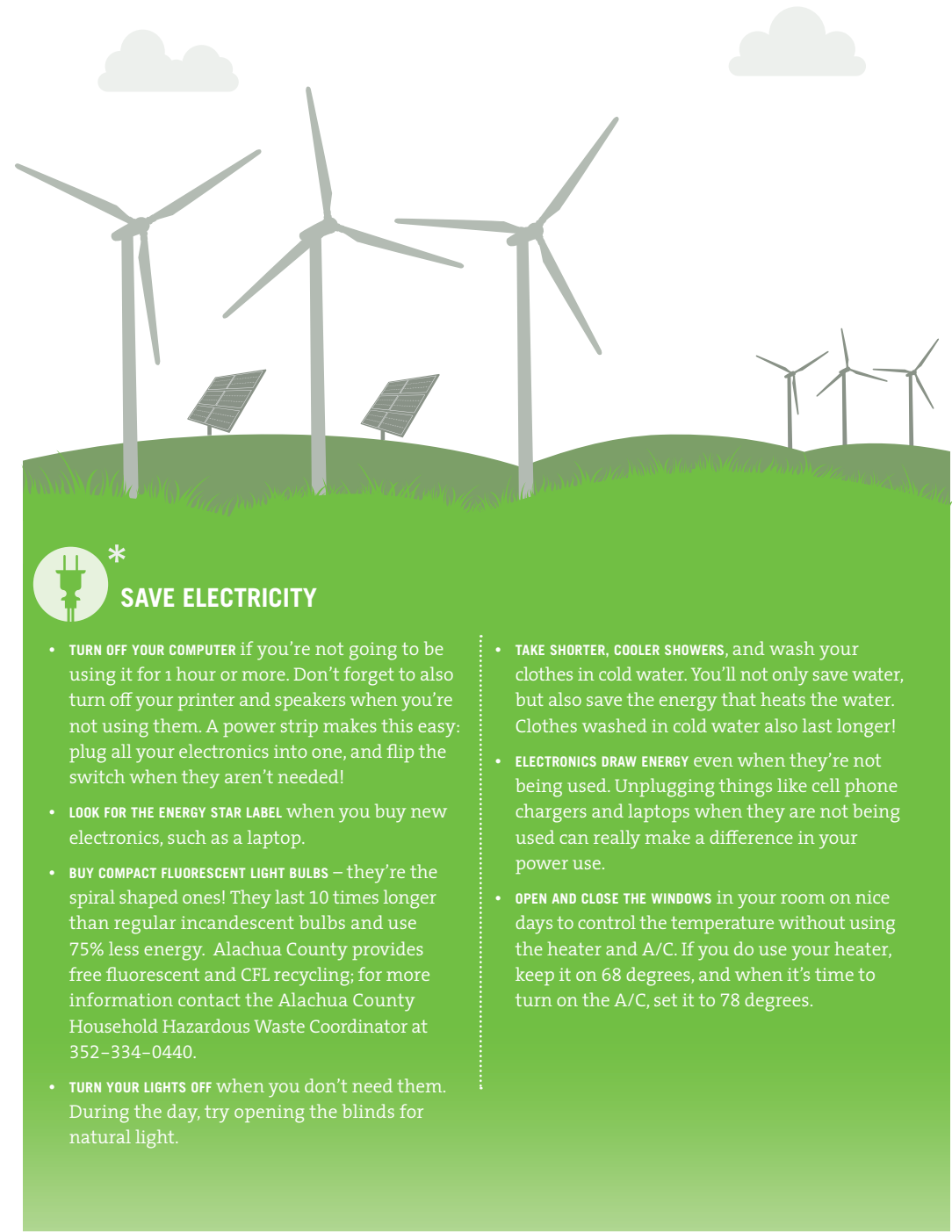
SAVE PAPER

- **RECONSIDER WHETHER YOU REALLY NEED TO PRINT** all of your documents, and if you do, conserve paper by printing double-sided.
- **RECYCLE NEWSPAPERS** by returning them to the bin.
- **USE FEWER PAPER TOWELS;** try a cloth napkin or dish towel instead.
- **BUY PRODUCTS MADE WITH RECYCLED PAPER** to reduce the destruction of forests. If you must use virgin paper, look for the FSC-certified label and try chlorine free paper to cut down on pollution.
- **BRING YOUR OWN MUG** to the coffee shop to reduce waste and get a discount! Gator Dining now offers reusable cups and mugs.
- **REDUCE JUNK MAIL** by asking that your name and address be removed from mailing lists. Check out Stop the Junk Mail Monster to find out how.
www.ecocycle.org/junkmail
- **VISIT www.catalogchoice.org** to stop receiving unwanted, excessive catalogs.



REDUCE WATER USE

- **GET A FILTER** and reusable water bottle so you can stop buying bottled water – tap water is usually as clean as or cleaner than bottled water, and a filter will make it taste great! Make sure your water bottle does not contain Polyvinylchloride (PVC) and Bisphenol (BP) chemicals found in some plastics.
- **TAKE SHORTER SHOWERS.**
- **TURN OFF WATER** when brushing teeth and shaving.
- **LET RAIN WATER YOUR YARD,** not sprinklers. If you must water, be sure to follow all local watering restrictions; more info on those can be found at www.sjrwmd.com
- **ONLY WASH FULL LOADS** of laundry and dishes.



SAVE ELECTRICITY

- **TURN OFF YOUR COMPUTER** if you're not going to be using it for 1 hour or more. Don't forget to also turn off your printer and speakers when you're not using them. A power strip makes this easy: plug all your electronics into one, and flip the switch when they aren't needed!
- **LOOK FOR THE ENERGY STAR LABEL** when you buy new electronics, such as a laptop.
- **BUY COMPACT FLUORESCENT LIGHT BULBS** – they're the spiral shaped ones! They last 10 times longer than regular incandescent bulbs and use 75% less energy. Alachua County provides free fluorescent and CFL recycling; for more information contact the Alachua County Household Hazardous Waste Coordinator at 352-334-0440.
- **TURN YOUR LIGHTS OFF** when you don't need them. During the day, try opening the blinds for natural light.
- **TAKE SHORTER, COOLER SHOWERS,** and wash your clothes in cold water. You'll not only save water, but also save the energy that heats the water. Clothes washed in cold water also last longer!
- **ELECTRONICS DRAW ENERGY** even when they're not being used. Unplugging things like cell phone chargers and laptops when they are not being used can really make a difference in your power use.
- **OPEN AND CLOSE THE WINDOWS** in your room on nice days to control the temperature without using the heater and A/C. If you do use your heater, keep it on 68 degrees, and when it's time to turn on the A/C, set it to 78 degrees.

SOLAR POWER IS THE CONVERSION OF SUNLIGHT INTO ELECTRICITY, IT IS BY FAR THE EARTH'S MOST AVAILABLE ENERGY SOURCE.

WIND POWER IS THE CONVERSION OF WIND ENERGY INTO A USEFUL FORM, SUCH AS ELECTRICITY, USING WIND TURBINES.



GREEN FUN

- **JOIN A STUDENT ORGANIZATION.** See page 15 for sustainability related groups.
- **GET INTO THE COMMUNITY** by teaching students about solar energy and recycling with Gators for a Sustainable Campus Outreach team. Email sustainablegators@gmail.com.
- **ROUND UP SOME AIR POTATOES** every spring in Gainesville area parks at the Great Air Potato Round-up. plants.ifas.ufl.edu/roundup
- **PARTICIPATE IN A DUMPSTER DIVE** or a creek clean-up with Gators for a Sustainable Campus or another sustainability-related group.
- **HELP TAILGATORS AT FOOTBALL GAMES RECYCLE** their cans and bottles - email gatorgreenteam@gmail.com or join the Gator Green Team Facebook group for more information.



GREEN GRADUATION PLEDGE

UF has a Graduation Pledge that all students are encouraged to make. When you graduate, you can sign the pledge, which states:

"I pledge to explore and take into account the social and ecological consequences of my decisions. Furthermore, I pledge to use the knowledge I gain at UF to improve the sustainability of the communities in which I live, learn, and work."

Look for the pledge table at the UF Bookstore during graduation gown pick up. You can also choose to join the Sustainable Alumni Network.

www.ufgreenalumni.org



SUSTAINABILITY INTERNSHIPS

Intern with the Office of Sustainability. Applications are available at sustainable.ufl.edu.



GREEN THRIFT

Don't throw away all your stuff when you move into and out of residence halls or apartments – sell or donate it. Also, get what you need from garage sales, second-hand stores, Craigslist.com, freecycle.org, or Facebook marketplace. Chances are, you can find it at those places instead of going to the store and paying full price! If you have to buy new, shop local, buying products from locally-owned businesses. If the products are made locally, it helps support the local economy, and can also mean shorter transport distances for your goods (which equals less carbon emissions). See page 17 for great local stores.



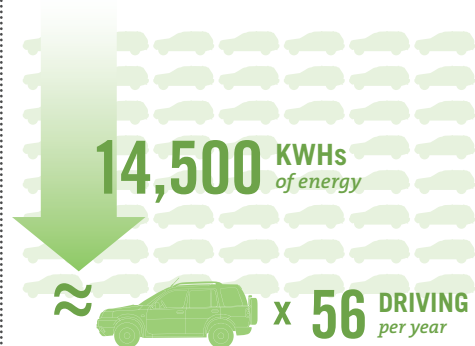
ECO-CHALLENGE

THE BATTLE OF THE HALLS:

In 2008, UF saw residence halls reduce their energy usage by more than 14,500 KWHs, or the equivalent of 340 tons of carbon. Be on the lookout for this annual spring competition between the residence halls. However, you don't have to wait until spring to start saving.

IN CASE YOU WERE WONDERING...

The Keys Residence won the 2009 challenge, congratulations Keys!



GREENHOUSE GAS EMISSIONS

BY SOURCE*

Transportation overall is 27% of U.S. emissions

PASSENGER CARS

35%

Campus alternatives include Zipcar, biking and RTS bus service. See page 23

HEAVY DUTY VEHICLES

19%

Most ozone pollution is caused by motor vehicles, which account for 72% of nitrogen oxides and 52% of reactive hydrocarbons (principal components of smog).

PLANES

9%

For new production aircraft, the fuel economy improvements have averaged 1 to 2 percent per year since the 1950s.

BICYCLES

0%

Reduce your personal carbon footprint... ride your bike!



GREEN TRANSIT

- **WALK, BIKE, TAKE A BUS, OR CARPOOL** (for more information, see page 23). If you need a car for personal use, rent a Zipcar.
- **COMBINE TRIPS AND ERRANDS**, take it easy on the gas and brake pedals, and go slower on the highway (you will improve your gas mileage!). Also, don't idle your engine for more than 10 seconds – it takes less gas to turn it off and back on.
- **FLY LESS**; take the train or carpool instead.
- **PURCHASE CARBON OFFSETS**, if you have to fly or drive long distances. For not too much money, you can offset the carbon your travel releases into the atmosphere. Visit Live Neutral for information: www.liveneutral.org.

VEHICLE FUEL CONSUMPTION

PASSENGER CARS

49%

VANS

22%

SUV's

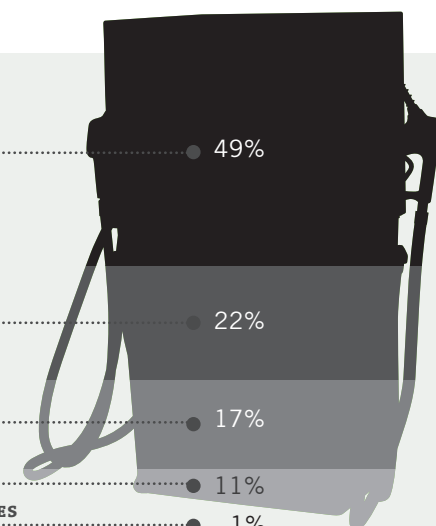
17%

PICKUP TRUCKS

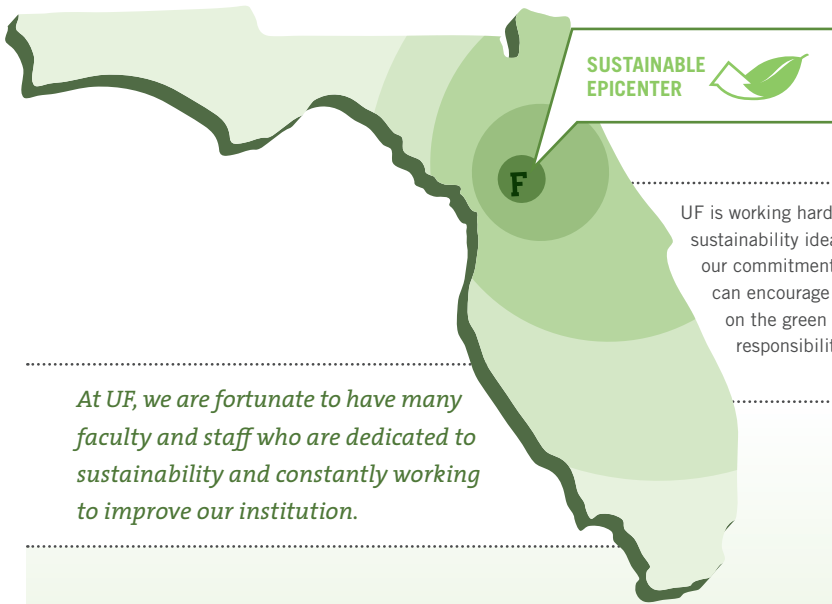
11%

LIGHT DUTY VEHICLES, RVs, MOTORCYCLES

1%



FLORIDA GOES GREEN



UF is working hard, on every level, to bring sustainability ideas into practice. By giving our commitment, energy, and ideas, students can encourage the administration to stay on the green course. It is everyone's responsibility to reduce our impact.

At UF, we are fortunate to have many faculty and staff who are dedicated to sustainability and constantly working to improve our institution.



CAMPUS STATISTICS

- We used 83 Megawatts of electricity in 2008, which cost UF \$40 million dollars. Progress Energy is the university's main provider. Most of our energy comes from non-renewable resources such as natural gas and coal.
- We generated 16,034 tons of solid waste in 2008. We recycled 5,199 tons, or 32%. UF recycles urban yard waste, concrete, wooden pallets, cardboard shipping boxes, and scrap metal. Cans and bottles are just one small part of the recycling program.

Here are the highlights of some of UF's innovative programs & projects already underway that promote sustainability.

AMERICAN COLLEGE AND UNIVERSITY PRESIDENT'S CLIMATE COMMITMENT:

UF's president Bernie Machen was the first to sign this pledge, and we have set a goal to reach carbon neutrality on campus by 2025. Visit their website: presidentsclimatecommitment.org to learn more about the commitment.

HEALTH AND SAFETY:

From purchasing recycled products to using Green Seal certified cleaners, our Building Services Division is doing many things to further sustainability. Even our carpets and vacuums carry a green label, which limits the harmful chemicals released into the air we breathe.

SWITCHING OUT THE LIGHTS:

The Physical Plant Division (PPD) is actively retrofitting old lighting fixtures with new technology capable of providing the same illumination with less energy.

SOCIAL EQUITY:

The University strives to pay all of its full-time employees fair wages and benefits. Currently UF pays 2 dollars over the Florida minimum wage. UF's commitment to paying fair wages includes all business partners on campus. UF also offers domestic partner benefits and health insurance to graduate students.

PURCHASING:

UF policy supports campus sustainability by providing guidelines, information, and resources in procuring products that will minimize negative impacts on society and the environment to the greatest extent practicable. The Purchasing Department and the Office of Sustainability also host a Sustainable Products Trade Show every spring.

GREEN TEAM NETWORK:

Green Team Members in many colleges, departments, and organizations across the university act as liaisons to the Office of Sustainability on campus for continuing efforts to develop a sustainable university, attempting to reduce both costs and the use of resources in their respective areas.

WASTE REDUCTION:

UF has recycled over 200 million pounds of waste in the last 15 years. President Machen has set a goal to be Zero-Waste by 2015.

GROUNDS AND MAINTENANCE:

Campus currently has over 30 conservation areas (look them up on the UF map online!). Our campus follows the guidelines of protecting net biodiversity and promoting the use of indigenous plants in landscaping.

CLOSED SOLID WASTE LOOP:

Our Physical Plant Division runs all of its trucks and equipment on a 20% biodiesel blend. Some of this fuel comes from used fryer oil on campus. RTS is now running its campus buses on 20% biodiesel.

BUILDING FOR A BETTER ENVIRONMENT:

All new buildings and major renovations on campus are designed to reach a minimum of LEED Gold standards (LEED standards are the green building rating system). Rinker Hall and Library West are certified Gold, the second highest LEED standard. Rinker features a green roof on one section, which is covered with soil and live, native plants.

BUSINESS PARTNERS:

UF and its corporate partners are working together to provide service with a conscience. Pepsi, Wachovia, Progress Energy, Aramark, and Follett help support many of the sustainability initiatives at UF.

HOUSING:

UF residential halls provide collection bins for charities during student move-out. Recycling is offered in all residence hall areas. Also, according to our purchasing directives, UF will only purchase "Energy Star" appliances or appliances that achieve a high energy efficiency rating.



GREEN EDUCATION

UF has offered a Minor in Sustainability Studies since fall 2008. It is an interdisciplinary minor, consisting of 18 credits.

“Facets of Sustainability” (IDS 2935) is the core course, with the additional four classes coming from a wide variety of class options. It also includes an internship or service learning component. For more information, talk to your advisor or visit: www.clas.ufl.edu/sustainability

A new major is also now available in The College of Design, Construction and Planning. You can find information about this major in Sustainability and the Built Environment at this website: www.dcp.ufl.edu/sustainability



USED BOOKS

This new website allows students to sell books to each other with the Classified Ads (textbook listing) and/or by receiving Buyback Alerts from the University of Florida Bookstore. These two options are designed to increase the availability of used books on campus and to lower the costs associated with textbook purchases. This effort will help make us a more sustainable campus by recycling your textbooks.

www.bsd.ufl.edu/BookMarket



SUSTAINABILITY MAJORS

SUSTAINABILITY AND THE BUILT ENVIRONMENT

College of Design, Construction and Planning

The Bachelor of Science in Sustainability and the Built Environment (BSSBE) will allow students to explore creative solutions for the planning, design and construction of human structures and settlements. Whether it is the rehabilitation and redesign of existing structures or innovative new design, students will be provided a theoretical foundation for seeking sustainable solutions to problems in the built environment.

ENVIRONMENTAL SCIENCE

College of Agricultural and Life Sciences

Environmental science is the science of people's role in natural systems, the basis of our economy. This program accesses courses university-wide and provides many opportunities for international study. This degree approaches numerous complex environmental issues with reliable knowledge and interdisciplinary perspectives, and provides the full range of knowledge relevant to complex environmental problems.

ENVIRONMENTAL ENGINEERING STUDIES

College of Engineering

Environmental engineering applies engineering and scientific principles to protect and preserve human health and the environment. It embraces broad environmental concerns, including air and water quality, solid and hazardous wastes, groundwater, etc.

FOOD AND RESOURCE ECONOMICS

College of Agricultural and Life Sciences

Specializations include Food and Agribusiness Marketing and Management; International Food and Resources Economics; Environmental Economics and Policy.

FOREST RESOURCES AND CONSERVATION

College of Agricultural and Life Sciences

The forest resources and conservation major provides students an extensive understanding of ecology, while developing expertise in the management of ecosystems to meet society's demands for a vast array of economic, ecological and social products and services.

HORTICULTURAL SCIENCES

College of Agricultural and Life Sciences

This major prepares students for careers in plant science, including management, production, applied research, molecular biology research, marketing, sales and a number of other areas. Students can receive training ranging from commodity production/cropping systems to basic plant science/molecular biology.

SOIL AND WATER SCIENCE

College of Agricultural and Life Sciences

Students majoring in soil and water science complete core requirements that stress a balance between the fundamentals of science and a foundation in the humanities, social sciences, business and natural science.

WILDLIFE ECOLOGY AND CONSERVATION

College of Agricultural and Life Sciences

This major provides training for a variety of wildlife careers, as well as a solid foundation for professional employment or advanced graduate study. This degree enhances knowledge of the conservation and management of wildlife and their habitats for the greatest aesthetic, ecological, economic and recreational values.

GREEN MEDIA



All sorts of media with a sustainable message or focus, personally recommended by the Office of Sustainability interns...



TV SHOWS

WASTED

Discovery Home

THE MANIC ORGANIC

Discovery Home

WORLD'S GREENEST HOMES

Discovery Home

PLANET EARTH

Discovery Channel
Available on DVD

BUILDING GREEN

PBS

SCIENTIFIC AMERICA FRONTIERS

PBS

BIG IDEAS FOR A SMALL PLANET

Sundance

EXPLORER

National Geographic Channel



BOOKS

Natural Capitalism: Creating the Next Industrial Revolution

Paul Hawken, Amory Lovins, and L. Hunter Lovins

The Sustainability Revolution

Andres R. Edwards

Plan B 3.0, Mobilizing to Save Civilization

Lester Brown

Ishmael

Daniel Quinn

Cradle to Cradle: Remaking the Way We Make Things

William McDonough, Michael Braungart

Living Green: A Practical Guide to Simple Sustainability

Greg Horn

Collapse: How Societies Choose to Fail or Succeed

Jared Diamond

The Omnivore's Dilemma: A Natural History of Four Meals

Michael Pollan

The Sustainability Advantage

Bob Willard

The Lazy Environmentalist

Josh Dorfman

It's Easy Being Green: A Handbook for Earth Friendly Living

Crissy Trask

The Live Earth Global Warming Survival Handbook

David De Rothschild

The Green Book

Elizabeth Rogers

Stirring It Up: How to Make Money and Save the World

Gary Hirshberg



MOVIES

AN INCONVENIENT TRUTH

Directed by: Davis Guggenheim
Starring: Al Gore

Humanity is sitting on a time bomb. If the vast majority of the world's scientists are right, we have just ten years to avert a major catastrophe that could send our entire planet into a tail-spin of epic destruction involving extreme weather, floods, droughts, epidemics and killer heat waves beyond anything we have ever experienced.

THE 11TH HOUR

Directed by: Leila Conners Petersen, Nadia Conners
Starring: Mikhail Gorbachev, Stephen Hawking,

Environmental documentary that firmly confronts viewers about the indelible human footprint that humans have left on this planet, and the catastrophic effects of environmental neglect and abuse.

GIMME GREEN

Directed by: Isaac Brown, Eric Flagg
Starring: Gary Bradshaw

A humorous look at the American obsession with the residential lawn and the effects it has on our environment, our wallets and our outlook on life. It investigates the \$40 billion industry that fuels our nation's largest irrigated crop—lawns.

BLACK GOLD

Directed by: Mark Francis, Nick Francis

Black Gold is a moving and eye-opening look into the 80 billion-dollar global coffee industry, whose spoils are sparsely shared with the farmers who make it all possible.

OVER THE HEDGE

Directed by: Ron Mann
Starring: Bruce Willis, Steve Carell

Spring has sprung, and Verne and his woodland friends awaken from their long winter's nap to discover that a tall, green "thing" has mysteriously cropped up right through the middle of their home.

PLANET IN PERIL

Starring: Jeff Corwin, Anderson Cooper

From the respected and thorough news team of CNN comes this look at our changing planet as seen through a variety of habitats that have felt the harsh imprint of human behavior.

HAPPY FEET

Directed by: Tim Johnson, Karey Kirkpatrick
Starring: Robin Williams, Elijah Wood

This is the story of a little penguin named Mumble who has a terrible singing voice and later discovers he has no Heartsong.

GO FURTHER

Directed by: Ron Mann
Starring: Woody Harrelson, Steve Clark

A documentary that charts the progress of an environmental activism bus tour from Seattle to Santa Barbara. In a biofuel bus burning hempseed oil as gas, painted with scenic and symbolic murals depicting the tour's goals, Harrelson and his crew set out to educate people on Simple Organic Living.

WHO KILLED THE ELECTRIC CAR?

Directed by: Chris Paine
Starring: Mel Gibson, Tom Hanks

It was among the fastest, most efficient production cars ever built. It ran on electricity, produced no emissions and catapulted American technology to the forefront of the automotive industry. The lucky few who drove it never wanted to give it up. So... who killed the car?

SICKO

Directed by: Michael Moore
Starring: Michael Moore

Documentary look at healthcare in the United States as provided by profit-oriented health maintenance organizations (HMOs) compared to free, universal care in Canada, the U.K., and France.

GET INVOLVED

Information on all student organizations at UF, including officers and meeting times, can be found on the Center for Student Involvement website: www.union.ufl.edu/involvement



SUSTAINABLE ORGANIZATIONS

GATORS FOR A SUSTAINABLE CAMPUS

www.sustainablegators.org

Aims to increase awareness of sustainability on campus and encourages students to lead more sustainable lives. GSC is affiliated with the UF Office of Sustainability and leads the Renewable Energy Fee initiative.

BIOENERGY AND SUSTAINABLE TECHNOLOGY SOCIETY

grove.ufl.edu/~bests

Provides a forum within which to discuss and educate the members and the public at-large about the technological realities, politics and economics of bioenergy and renewable resources, energy conversion and distribution, and sustainable technologies.

SOCIETY FOR CONSERVATION BIOLOGY

www.geocities.com/florida_scb/about.html

An International professional organization dedicated to promoting the scientific study of the phenomena that affect the maintenance, loss, and restoration of biological diversity.

HUMAN RIGHTS AWARENESS ON CAMPUS

grove.ufl.edu/~hra

Promotes awareness and activism concerning human rights abuses around the world, particularly in cases of genocide.

ENVEG

www.enveg.org

A group that encourages people to reduce their industrial-raised meat, dairy and egg consumption in order to help slow climate change. By promoting and increasing the ease of cooking without meat, enVeg shows people that you don't have to sacrifice the environment to eat well.

ROOTS AND SHOOTS

www.rootsandshoots.org

Shares ideas and inspirations to create positive changes for the community, animals, and the environment, implements community service projects and special events, and promotes awareness about social, political, and economic issues as they relate to environmental issues.



STUDENT REPRESENTATION

GRADUATE ASSISTANTS UNITED

Represents graduate students in forming contracts with the University and fighting for benefits such as health care and pay-raises for grad students. www.ufgau.org

CHOMP THE VOTE

Student Government's agency responsible for registering UF students to vote and increasing student voter turnout. Volunteers are always needed!

STUDENT GOVERNMENT STUDENTS TAKING ACTION AGAINST RACISM

STAAR has a mission to encourage a diverse atmosphere for UF students to grow and learn from. www.sg.ufl.edu/staar

STUDENT GOVERNMENT AGENCY FOR JOINT STANDING UF SUSTAINABILITY COMMITTEE

Seeks to enhance the university's standing as a global leader in sustainability. Student Government appoints two student representatives to the committee each year. Apply at www.dso.ufl.edu/vpsa

SUSTAINABILITY

Works towards implementing policies and programming which brings about sustainable improvements to the University of Florida. Email Bailey Kilbourne at bailey@ufl.edu or call 561-573-3258.

U.S. GREEN BUILDING COUNCIL, UF STUDENT CHAPTER

Works to raise awareness of green building principles and practices among the design, construction, planning, engineering, and real estate communities.

CHANGE THE WORLD: STUDENT SOCIAL ENTREPRENEURS AT UF

www.changetheworlduf.org

Mission is to educate students to think innovatively about social problems in the local community and around the world and empower them to create positive social change.

UF UNITED WORLD ORGANIZATION

Aims to enable young people to become responsible citizens, environmentally and politically aware, and committed to the ideals of peace and justice, understanding and cooperation, through international education, experience and community service.

CHILDREN BEYOND OUR BORDERS

www.chbob.org

Primary purpose is to provide support for impoverished children in Latin American countries and the world through social projects that stress, above all, education.

UF STUDENTS IN FREE ENTERPRISE (SIFE)

www.ufsife.com

Facilitates student teams to take what they are learning in the classroom and use that knowledge to create and implement educational outreach projects in their community. One of SIFE's "pillars" is sustainability.

UF GREEKS GOING GREEN

ufgreeksgoinggreen.wordpress.com

Promotes environmental awareness and eco-friendliness within the UF Greek community.

THE STUDENT CHAPTER OF THE WILDLIFE SOCIETY

grove.ufl.edu/~tws

Affiliated with The Wildlife Society, which is part of the network for the professional society for wildlife biologists.

GREEN MARKET



By patronizing these sustainability-minded businesses you can build a stronger market for responsible business growth, support our local economy, and find some pretty tasty treats along the way.



CLOTHING & MORE

American Apparel

(352) 372-2262
15 SW 1st Ave.
www.americanapparel.net

Flashback's Recycled Fashions

(352) 375-3752
509 NW 10th Ave.

Humane Society Thrift Shop

(352) 373-9522
2029 NW 6th Street
www.alachuahumane.org

Indigo – Green Home Products

(352) 378-2285
322 SW 4th Ave.
indigogreenstore.com

Peaceful Paths Thrift Shop

(352) 379-3133
608 N Main Street

The Second Hand Rose

(352) 371-1455
710 N Main Street

Waldo Flea Market

Saturdays and Sundays
(352) 468-2255
Highway 301, Waldo

Play It Again Sports

(352) 377-7666
3425 W University Ave.

Plato's Closet

(352) 374-4402
3333 SW 34th Street

Habitat for Humanity Thrift Store

(352) 373-5728
2317 SW 13th Street

Goodwill

(352) 378-4449
2624 NW 13th Street
(352) 376-9041
3520 SW 34th Street



GROCERIES

Alachua County Farmers Market

Saturdays, 8:30 AM to 1 PM
Corner of U.S. Highway 441 and County Road 121

Downtown Farmer's Market

Wednesday, 4 PM to 7 PM
(352) 462-3192
Downtown Community Plaza

Ward's Supermarket

(352) 372-1741
515 NW 23rd Ave.

Haile Plantation Farmer's Market

Saturday, 8:30 AM - 12 PM, seasonal
SW 91st Terrace

Mother Earth Market

(352) 378-5224
521 NW 13th Street



RESTAURANTS

These are just a few of the restaurants in Gainesville that serve organic, locally grown foods, have great vegetarian and vegan options, pay living wages, and/or use recycled materials.

Bistro 1245

(352) 376-0000
1245 W University Ave.

Book Lover's Cafe

(352) 384-0090
505 NW 13th Street, 32601

Buddha Belly

(352) 377-0287
25 NW 16th Ave.

Burrito Bros. Taco Co.

(352) 378-5948
1402 W University Ave.

Café Gardens

(352) 376-2233
1643 NW 1st Ave.

Chipotle

(352) 372-5330
1432 W University Ave.

Coffee Culture

(352) 377-1700
2020 NW 13th Street

Dragonfly Rolls 'n Bowls

(352) 271-1011
3117 SW 34th Street, Suite 1

Dragonfly Sushi and Sake Co.

(352) 371-3359
201 SE 2nd Ave.

Emiliano's

(352) 375-7381
7 SE 1st Ave.

El Indio

(352) 377-5828
407 NW 13th Street

Harvest Thyme

(352) 384-9497
2 W University Ave.

Ivey's Grill

(352) 371-4839
3303 W University Ave.

The Jones

(352) 373-6777
401 NE 23rd Ave.

Leonardo's 706

(352) 378-2001
706 W University Ave.

Leonardo's By the Slice

(352) 375-2007
1245 W University Ave.

Luca's Pasta

(352) 338-1700
607 W University Ave.

Maude's Cafe

(352) 336-9646
101 SE 2nd Place

Mildred's Big City Food

(352) 371-1711
3445 W University Ave.

New Deal Café

(352) 371-4418
3445 W University Ave.

Paramount Grill

(352) 378-3398
12 SW 1st Ave

Reggae Shack Café

(352) 377-5464
619 W University Ave.

Satchel's

(352) 335-7272
1800 NE 23rd Ave.

Steamer's

(352) 374-9920
1614 NW 1st Ave.

Sweet Dreams Ice Cream

(352) 378-0532
3437 W University Ave.

Sweetwater Organic Coffee

(352) 372-8342
1331 S Main Street

Ti Amo!

(352) 373-6307
12 SE 2nd Ave.

Tim & Terry's Music & More

(352) 373-3786
1417 NW 1st Ave.

The Top

(352) 337-1188
30 N Main Street

Volta Café

(352) 271-4361
48 SW 2nd Street

GREEN ACTIVITIES



ENTERTAINMENT AND CULTURE

The Civic Media Center

The Civic Media Center (CMC) hosts meetings and concerts, shows movies and plays, and offers an alternative library with 10,000 items.

(352) 373-0010
433 S Main Street
www.civicmediacenter.org

Gainesville Rock Gym

Try rock climbing sometime or take a whole class and become an expert. Get a group of friends together for a fun and active climb.

(352) 335-4789
704 S Main Street
www.gainesvillerock.com

The Hippodrome State Theatre

This beautiful building in downtown Gainesville is a performing arts theatre and independent movie theatre. They also offer student discount tickets.

(352) 375-4477
25 SE 2nd Place
www.thehipp.org

Phillips Center for the Performing Arts

The Phillips Center hosts local and national touring theater productions. There are some student tickets available for only \$10!

(352) 392-1900
SW 34th Street and Hull Road
www.performingarts.ufl.edu

Samuel P. Harn Museum of Art

Commonly known as the Harn, this art museum is on campus, is FREE, and hosts Museum Nights along with the Museum of Natural History certain Thursdays for UF students.

(352) 392-9826
SW 34th Street and Hull Road
www.harn.ufl.edu

Florida Museum of Natural History

Check out the Megalodon Shark Exhibit, the Butterfly Rainforest, and the Museum Nights activities. Admission is free and UF students get discounts on ticketed exhibits!

(352) 846-2000
SW 34th Street and Hull Road
www.flmnh.ufl.edu

University Gallery

The Gallery features artwork by students, faculty, staff, and alumni. Exhibits rotate during the year.

(352) 392-2378
2nd floor of the Reitz Union
www.union.ufl.edu/gallery

University Auditorium

The University Auditorium hosts a wide variety of musical performances. There are some student tickets available for only \$10!

(352) 392-1900
Union Road and Newell Drive



THE GREAT OUTDOORS

Gainesville and its surrounding areas are teeming with state parks with great activities such as hiking, sightseeing, tubing and swimming. There are many great places right on campus, like Lake Alice, the Bat House, and nature trails to enjoy.



Devil's Millhopper Geological State Park

A 120 ft. sinkhole that leads down to a miniature rain forest.

(352) 955-2008
4732 Millhopper Road, 32653
www.floridastateparks.org/devilsmilhopper

Ichetucknee Springs State Park

A six mile river that flows through shaded hammocks and wetlands – great for tubing, canoeing, swimming, and hiking.

(386) 497-2511
12087 SW US Hwy 27
Fort White, 32038
www.floridastateparks.org/ichetuckneesprings

Payne's Prairie Preserve State Park

Opportunities for hiking, horseback riding, bicycling, and viewing wildlife.

(352) 466-3397
100 Savannah Blvd.
Micanopy, 32667
www.floridastateparks.org/paynesprairie

Alfred A. Ring Park

A system of nature trails and boardwalks leads visitors along Hogtown Creek and through Upland Mixed Forest.

www.cityofgainesville.org

Kanapaha Botanical Gardens

62 diverse acres of plants and flowers make up this year round garden.

(352) 372-4981
4700 SW 58th Drive
www.kanapaha.org

Lake Wauburg

UF owns its own lake and park! Everything here is free with your Gator 1 ID card, including canoeing, water skiing, paddle boats, a ropes course, and more!

(352) 466-4112
Highway 441 (8 miles south of campus)
www.recsports.ufl.edu/lakeWauburg.aspx

Gainesville-Hawthorne Trail State Park

A 16 mile recreational trail for walking, cycling, and horseback riding.

(352) 466-3397
3400 SE 15th Street, 32641
www.floridastateparks.org/gainesville-hawthorne

Ginnie Springs Outdoors

Picturesque springs for tubing, swimming, and camping.

(386) 454-7188
7300 NE Ginnie Springs Road
High Springs, FL 32643
www.ginniespringsoutdoors.com



The Bat House is down Museum Road towards Fraternity Row, and they leave their house at sundown.

VOLUNTEER RESOURCES

There are thousands of ways to volunteer during your time here at UF. Find something you like and go for it. We've listed a few places to get you started. You can also scan over the "Gator Times" in your email. Different ways to get involved are listed each week.



THE ARTS

Cultural Arts Coalition

Work with at-risk youth and volunteer to help out with the annual 5th Avenue Arts Festival.

<http://culturalartscoalition.org>

Ushers for the University of Florida Performing Arts

Contribute to the arts and see shows for free.

352-392-1900, ext. 315
performingarts.ufl.edu/getconnected/volunteer

Florida Museum of Natural History

Whether they're with a curator behind-the-scenes or with youngsters in the Butterfly Rainforest, volunteers are a vital part of the mission of the Florida Museum of Natural History. For more information, contact Julie Crosby.

(352) 846-2000, ext. 210
www.volunteers@flmnh.ufl.edu

Civic Media Center

Non-profit alternative media venue.

(352) 373-0010 or grace4@ufl.edu.
www.civicmediacenter.org



CIVIC SERVICE

Student Adjunct for City Advisory Board

The city offers a spot specifically to a student on 18 of its advisory boards. To be eligible to apply, a student must attend a meeting of the board of his or her choice in August or September. See www.cityofgainesville.org/organiz/clerk/meetings or contact SG's Community Political Affairs Cabinet .

(352) 392-1665
politicalaff@sg.ufl.edu

Women for Wise Growth

An organization of women dedicated to preserving quality of life in Alachua County that enhances the social and environmental fabric of our community.

treecity.net/wwg

League of Women Voters (not just for ladies!)

A nonpartisan political organization, the League of Women Voters (LWV) encourages the informed and active participation of citizens in government, works to increase understanding of major public policy issues, and influences public policy through education and advocacy.

www.lwv-alachua.org



HUMANITARIAN

Alachua County Crisis Center

24-hour telephone crisis intervention and counseling service offered by trained volunteers under the supervision of the Crisis Center Staff. Call to volunteer.

(352) 264-6785
crisiscenter.alachua.fl.us

Gainesville Community Weatherization Coalition

A community coalition focused on improving weatherization and energy efficiency for low-income households through education and volunteer work projects.

<http://rebuildgainesville.wordpress.com/cwc>

Shands at the University of Florida

Assist with patient and visitor escort, patient transportation, childcare, adult visitation, tours, and patient mail service. They provide pet therapy visits and raise funds that support patient services and provide scholarships.

(352) 265-0360
www.shands.org

UF Habitat For Humanity

UF students coming together with residents of Gainesville to build homes in the Gainesville community.

www.ufhabitat.org

Rebuild Gainesville

There are many ways to get involved with Rebuild's home repair efforts year round.

www.rebuildgainesville.org

St. Francis House

A homeless shelter and soup kitchen, volunteer with individuals, work in the kitchen or volunteer in their library.

(352) 378-1883
www.stfrancishousegenv.org

Gainesville Harvest

This organization is an innovative solution to hunger in Gainesville that gives food companies a convenient, reliable and safe way to channel surplus food to hungry people.

www.gainesvilleharvest.com



ANIMALS

Gainesville Pet Rescue

There are many ways to help our furry friends in need.

(352) 331-1087
www.gainesvillepetrescue.org

Alachua County Humane Society

From dog walking, dog bathing, cat grooming, cleaning, delivery drivers, to administrative help and photographers... they need your help.

www.alachuahumane.org



THE ENVIRONMENT

Friends of Paynes Prairie

Provide support through fundraising, outreach, and education.

info@prairiefriends.org
www.prairiefriends.org

Keep Alachua County Beautiful

Beautify, conserve resources, recycle, educate and preserve Alachua's environmental legacy through beautification activities, environmental action, small and large restoration projects, and by promoting recycling and reducing waste products.

www.kacb.org

Watershed Action Volunteers

Clean up a creek or help teach kids about water conservation.

www.sjrwmd.com/education/wav

UF Clean Water Campaign

Work with passionate Florida students about clean water ways.

campuswaterquality.ifas.ufl.edu

Gainesville's Nature Operations Div.

As a volunteer you might find yourself roaming the trails assisting biologists with a variety of environmental projects. Apply online.

www.cityofgainesville.org

GREEN TRANSIT



Save money, avoid traffic and parking hassles, and prevent pollution by leaving your car at home. With all the modes of transportation UF and Gainesville have to offer, traveling alone by car may soon be a thing of the past.



BY FOOT

The main part of campus is not that large, so walking is always an option! Many restaurants and shops on University Ave are within walking distance from campus.



ZIPCAR

If you need a vehicle for a specific errand or trip, you still don't need to have your own car. The Zipcar program offers 8 low-emission vehicles on campus to choose from, including 3 hybrids, and several trucks. Zipcar members just pay \$7 per hour for all vehicles, including fuel.

www.zipcar.com



GREENRIDE

UF GreenRide helps you find carpool partners by searching for other employees or students who live near you and have similar schedules and lifestyle preferences. You'll even get to see a map of the general area showing potential carpoolers near you.

portal.greenride.com



BY BUS

Riding the bus is good for people watching, listening to your iPod, and reducing pollution and traffic.

REGIONAL TRANSIT SYSTEM (RTS)

UF students, faculty, and staff enjoy unlimited access to all RTS services anytime. It's FREE with your Gator 1 ID card. RTS has routes throughout the UF campus and Gainesville. For your nights out, there are three Later Gator bus routes that take students downtown at night. You can find RTS bus schedules all over campus and online.

www.go-rts.com

With the new Gator Locator you can see where your bus is in real time. Busses enabled with the GPS system can be tracked online through your computer or web-enabled phone.

www.gpsrts.ufl.edu

BUSSING HOME

Homesick? If you don't bring your car, how can you go home for the weekend or holidays? If carpooling is not an option, GMG Transport and the Miami Bus Service provide weekly service to/from Gainesville and Miami, Ft. Lauderdale, Pompano, West Palm Beach, Ft. Pierce, and Orlando for only \$35 to \$45. UF doesn't endorse any particular service.

www.gmgtrans.com

www.miamibusservice.com



BY BIKE

Bicycling is an excellent way to minimize car use and get exercise at the same time. It will also get you to class faster than walking! Because more people at UF are turning to bicycles as a transportation alternative to cars, bike lanes have been designated for bicyclists on campus roads that get the most traffic.

REGISTER IT!

Worried about bike theft or maintenance? The University Police Department (UPD) offers bicycle registration in order to aid in recovery in the case of bicycle theft. To register your bicycle, simply stop by UPD's office on Museum Drive or stop any UPD patrol person and ask them to register your bicycle.

BIKE REPAIR

Student Government offers FREE bike repair outside the Reitz Union from 10 am to 4 pm Monday through Friday. The Kickstand, a bicycle community center, offers free or low-cost bicycle repair, as well as tools and instructions to fix problems yourself.

722 S Main Street

www.thekickstand.org

WHERE CAN I GET A BIKE?

Graduating students sell their bikes all the time on Facebook Marketplace and Craigslist.com. Gainesville has a lot of used and new bicycle shops as well.

BIKE SHOPS

Bike Route

NW 43rd Street and Highway 441

Chain Reaction Bicycles

1630 W University Ave.

Gator Cycle

3321 SW Archer Road

Mr. Goodbike

425 NW 13th Street

Spin Cycle

424 W University Ave.

Swamp Cycle

534 SW 4th Ave.

633 NW 13th Street



Please join our Sustainable Gator Pledge Facebook group to demonstrate your commitment.

SUSTAINABLE GATOR PLEDGE

As a member of the UF community, I will do my best to minimize my environmental impacts by pledging to practice the following:

Wash my clothes in cold water.
Use compact fluorescent light bulbs.
Use items with recycled content.
Buy local when it's an option.
Recycle all plastic, glass, and aluminum containers.
Make sure that my computer is set to go into sleep mode.
Hold my representatives responsible for their actions by voting.

Think twice before printing, print double-sided, and recycle all paper.
Use reusable coffee cups and glasses so I can stop using paper ones.
Take shorter showers and turn off the water when brushing my teeth.
Walk, bus, bike, and carpool when I can, and combine errands to reduce driving distances.
Turn off computers, lights, and other equipment, and unplug electronics.



sustainable UF

“The ultimate test of a moral society is the kind of world it leaves to its children.”

– Dietrich Bonhoeffer

Have any questions?

Check out our FAQ section on the sustainability website at sustainable.ufl.edu/questions

Any ideas or events to share?

Visit our forum at <http://groups.google.com/group/uf-sustainability>

Interested and want to learn more?

Sign up for the monthly Sustainability Newsletter at sustainable.ufl.edu